

# THE JACK PINE TS-04

## 2-Storey Detached

### ELEVATION A

4,360 SQ. FT.

+ 96 SQ. FT. FIN. BASEMENT (OPT. + 234 SQ. FT.)



# CLAREHAVEN

ESTATES



Builder reserves the right to substitute materials for equal or better quality. Prices, any lot premiums, features and any applicable incentives referred to are subject to change without notice. Lot sizes, square footages and room dimensions are approximate and are subject to change without notice. Please refer to Schedule 'B' and 'C' of the Agreement of Purchase and Sale for full details. Illustrations and photographs included may be updated features and/or Artist's concept. October, 2023. E.60.E.

# THE JACK PINE TS-04

## 2-Storey Detached

4,360 SQ. FT.  
+ 96 SQ. FT. FINISHED BASEMENT (OPT. + 234 SQ. FT.)

### GROUND FLOOR ELEVATION A



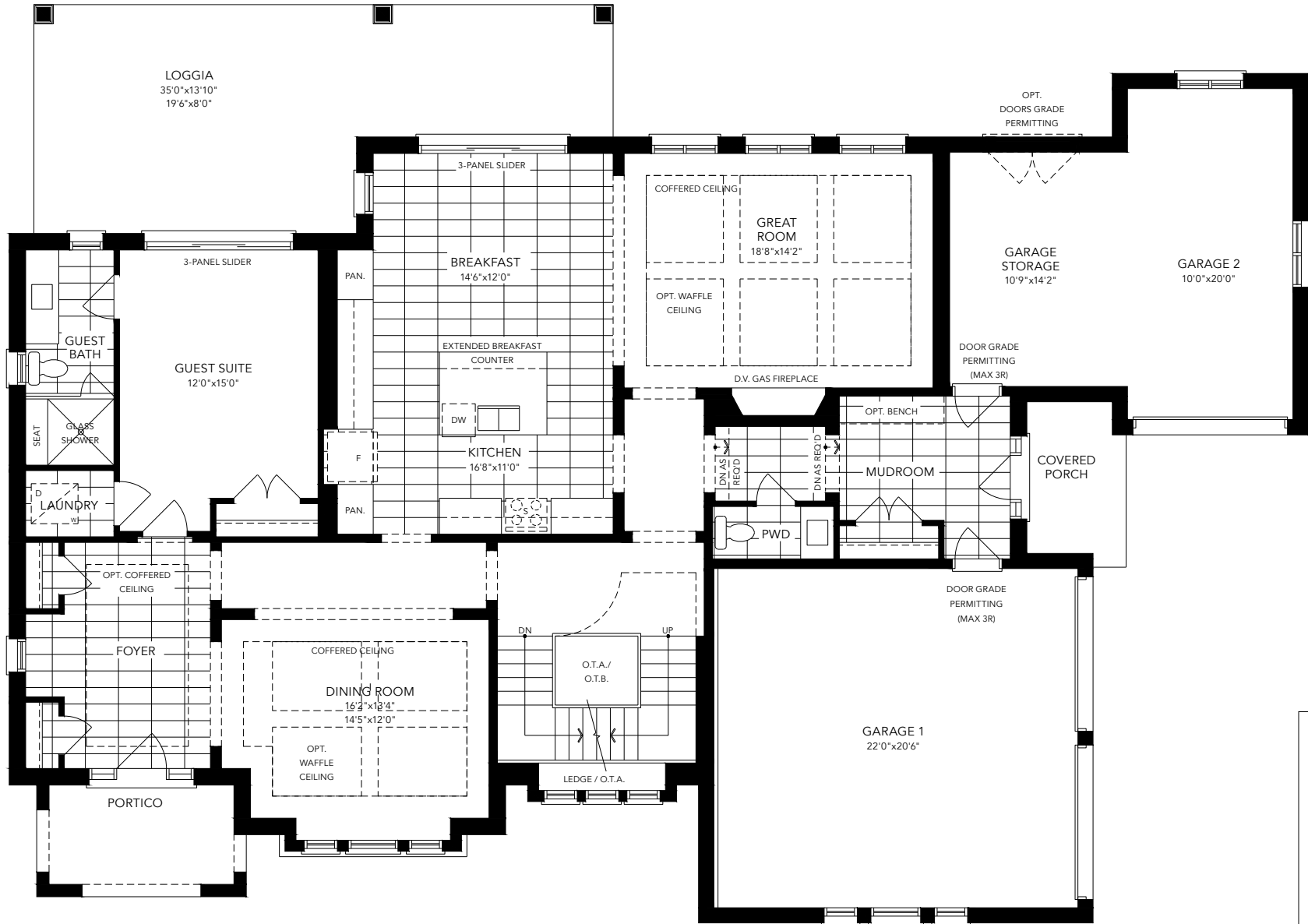
ELEVATOR PLAN  
AVAILABLE!  
SCAN TO VIEW.

# THE JACK PINE TS-04

## 2-Storey Detached

4,360 SQ. FT.  
+ 96 SQ. FT. FINISHED BASEMENT (OPT. + 234 SQ. FT.)

### GROUND FLOOR - OPTIONAL WITH GUEST SUITE ELEVATION A



ELEVATOR PLAN  
AVAILABLE!  
SCAN TO VIEW.

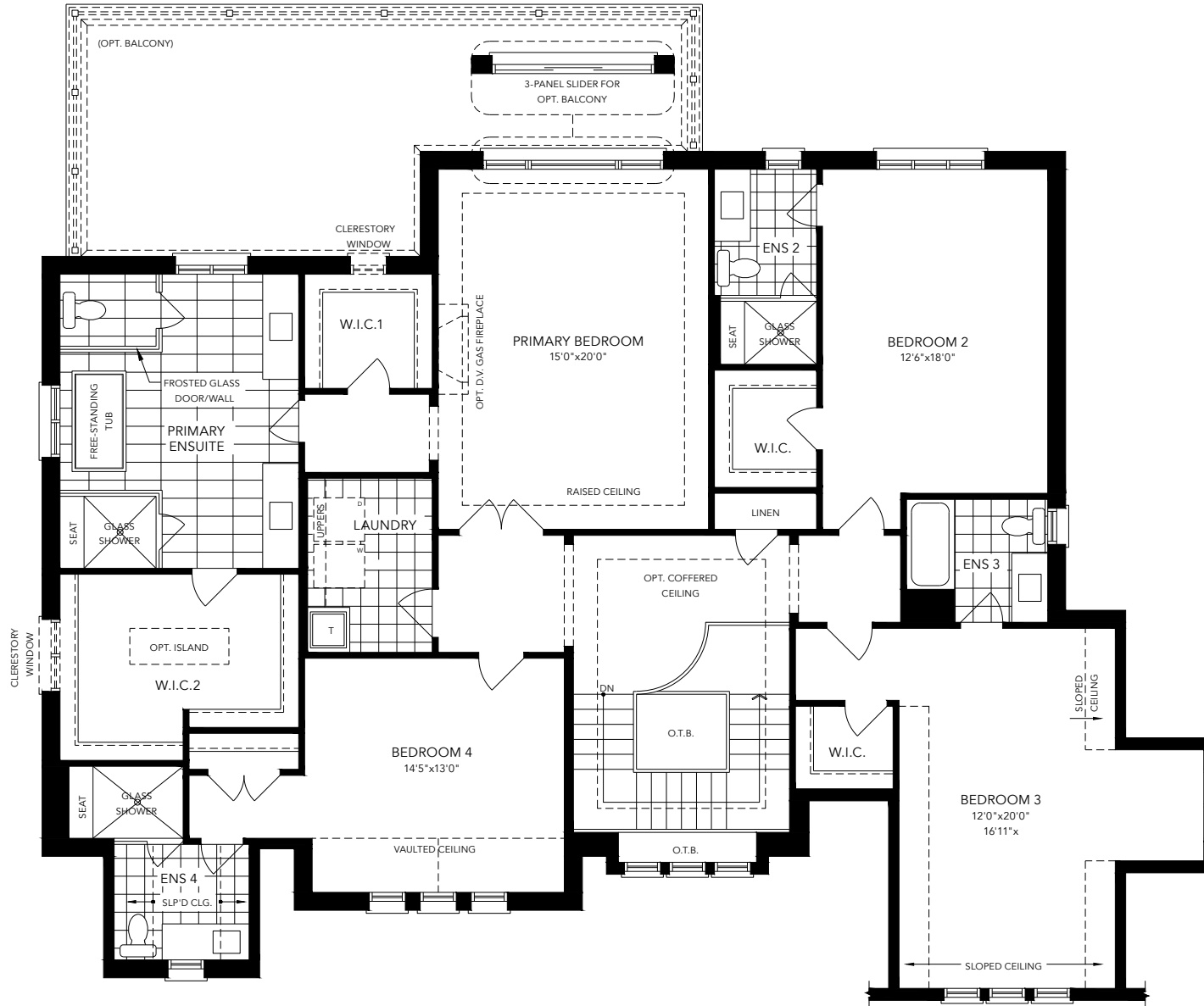


# THE JACK PINE TS-04

## 2-Storey Detached

4,360 SQ. FT.  
+ 96 SQ. FT. FINISHED BASEMENT (OPT. + 234 SQ. FT.)

### SECOND FLOOR ELEVATION A



ELEVATOR PLAN  
AVAILABLE!  
SCAN TO VIEW.



# THE JACK PINE TS-04

## 2-Storey Detached

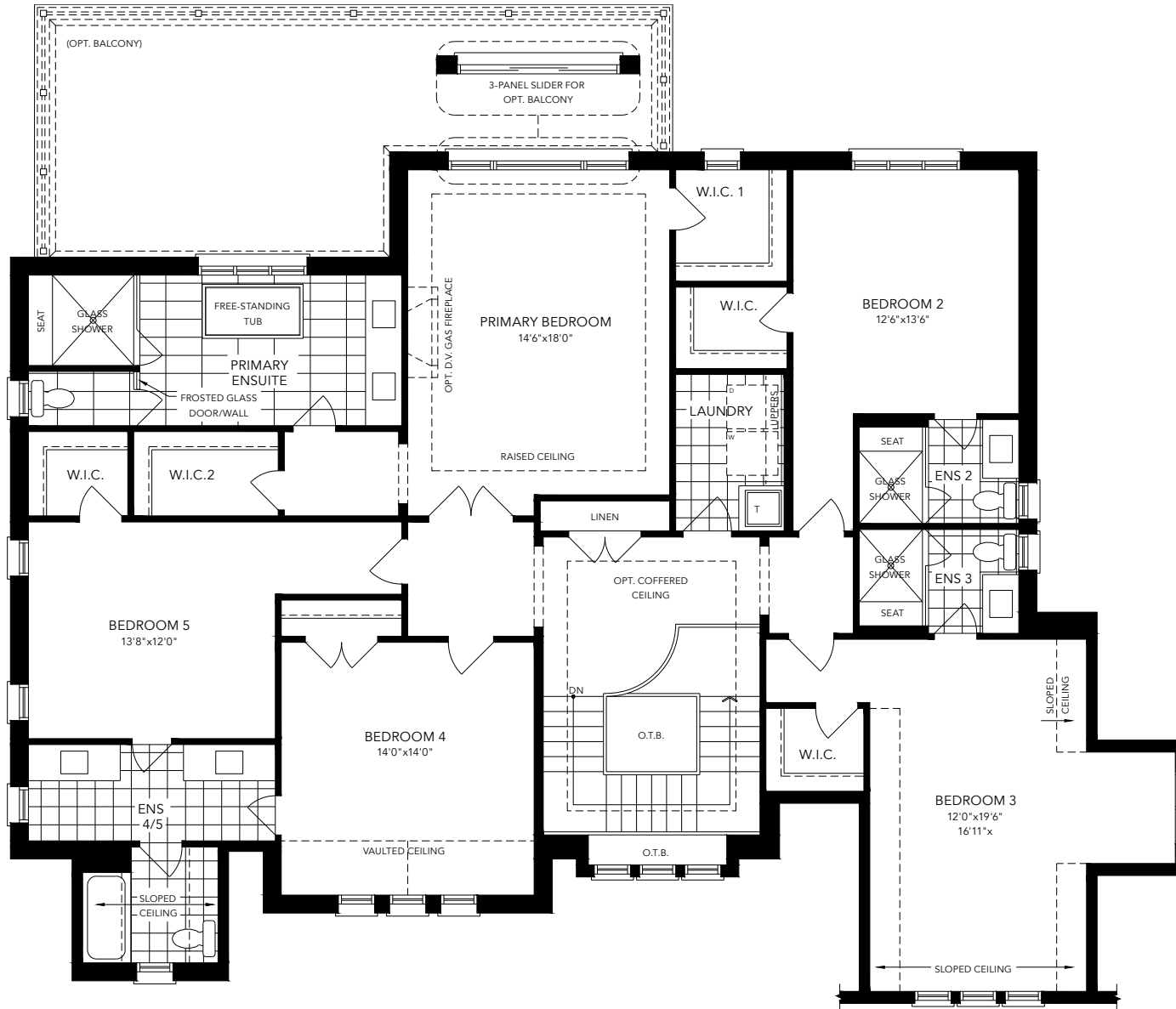
4,360 SQ. FT.

+ 96 SQ. FT. FINISHED BASEMENT (OPT. + 234 SQ. FT.)

### SECOND FLOOR - OPTIONAL WITH 5 BEDROOM ELEVATION A

5

ClareHavenEstates.com



ELEVATOR PLAN  
AVAILABLE!  
SCAN TO VIEW.

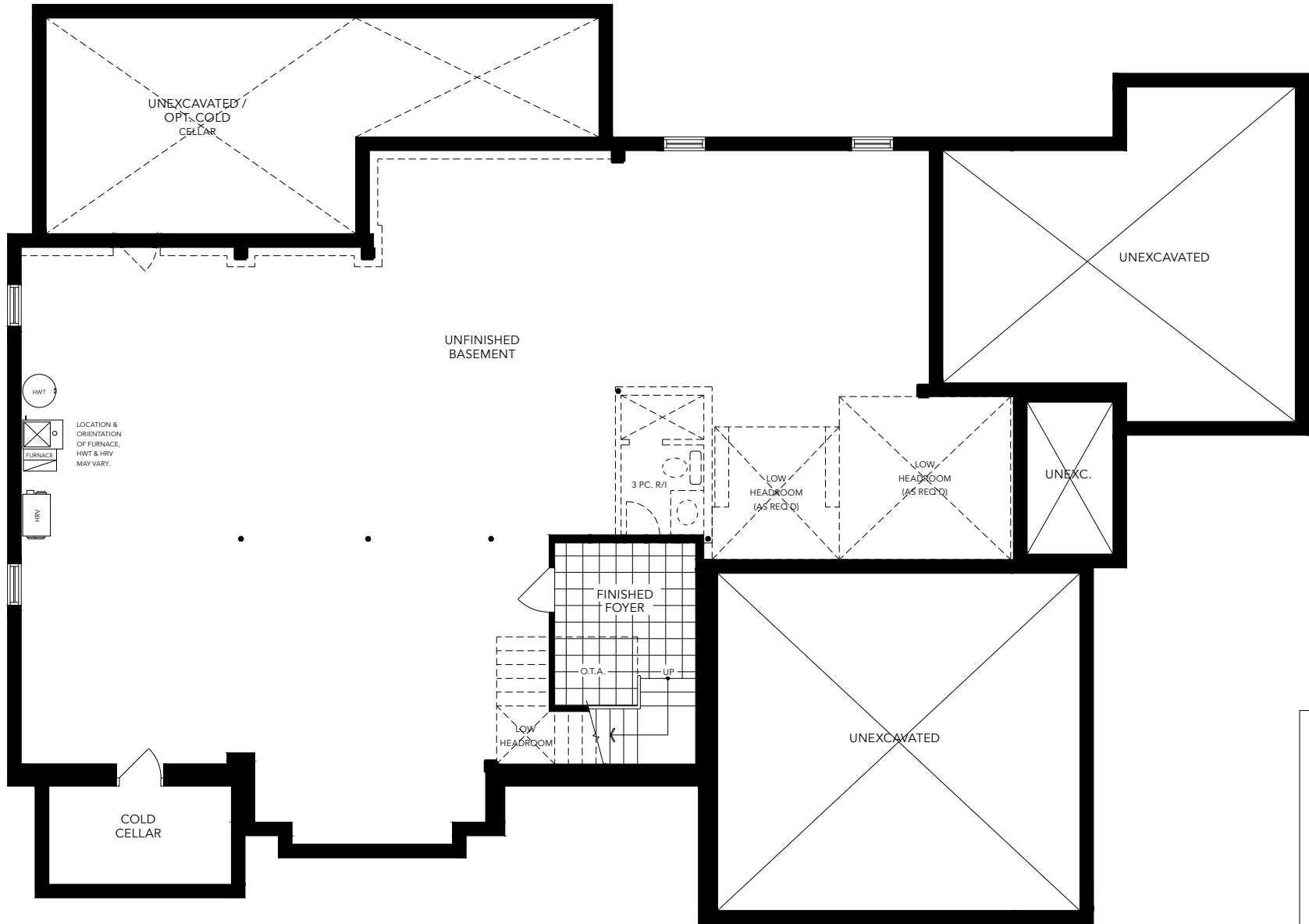


# THE JACK PINE TS-04

## 2-Storey Detached

4,360 SQ. FT.  
+ 96 SQ. FT. FINISHED BASEMENT (OPT. + 234 SQ. FT.)

### BASEMENT ELEVATION A



ELEVATOR PLAN  
AVAILABLE!  
SCAN TO VIEW.



# THE JACK PINE TS-04

## 2-Storey Detached

### ELEVATION B

4,390 SQ. FT.

+ 96 SQ. FT. FINISHED BASEMENT (OPT. + 234 SQ. FT.)



# CLAREHAVEN

ESTATES



# THE JACK PINE TS-04

## 2-Storey Detached

4,390 SQ. FT.

+ 96 SQ. FT. FINISHED BASEMENT (OPT. +234 SQ. FT.)

### GROUND FLOOR ELEVATION B



ELEVATOR PLAN  
AVAILABLE!  
SCAN TO VIEW.



# THE JACK PINE TS-04

## 2-Storey Detached

4,390 SQ. FT.  
+ 96 SQ. FT. FINISHED BASEMENT (OPT. +234 SQ. FT.)

### GROUND FLOOR - OPTIONAL WITH GUEST SUITE ELEVATION B



ELEVATOR PLAN  
AVAILABLE!  
SCAN TO VIEW.

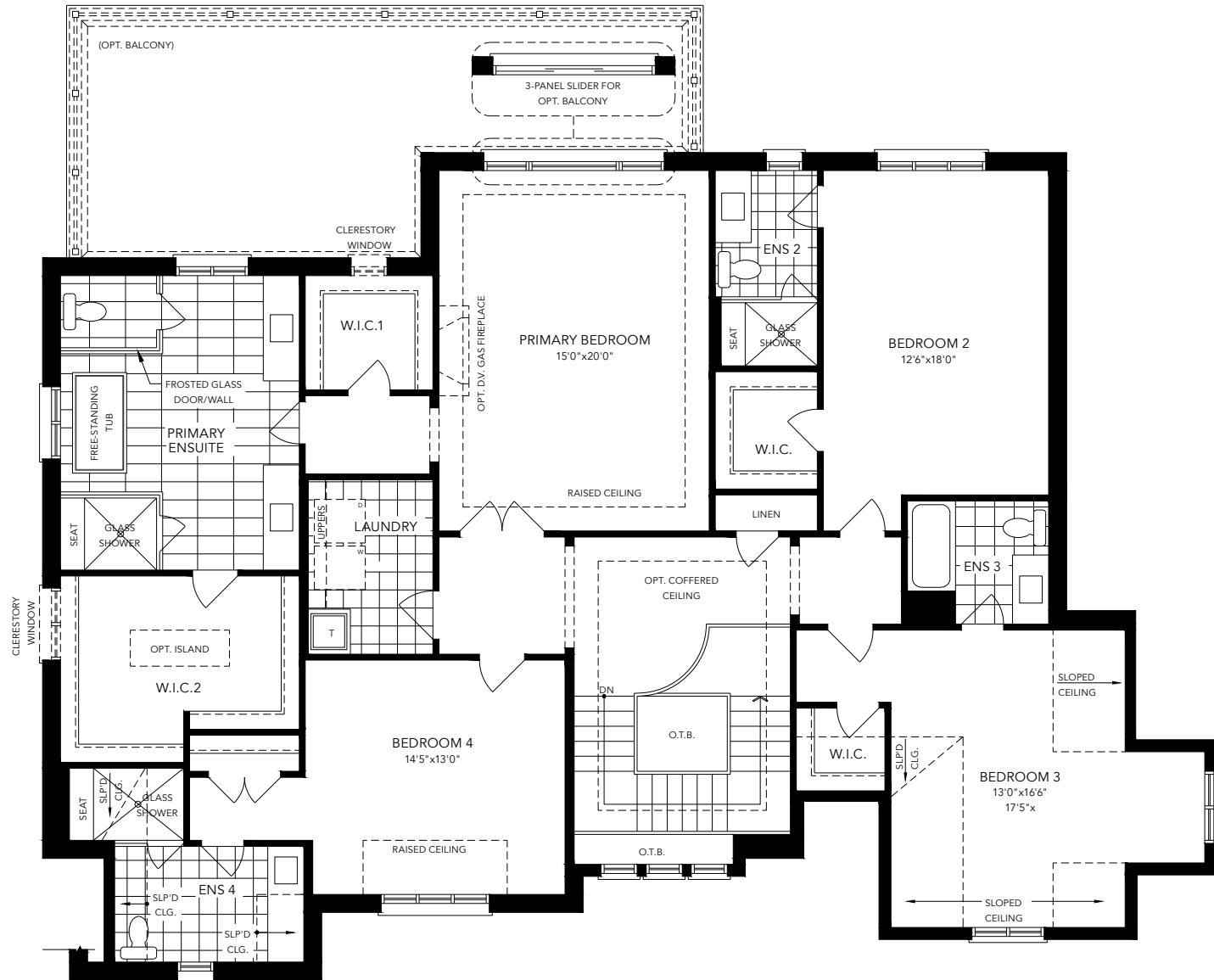


# THE JACK PINE TS-04

## 2-Storey Detached

4,390 SQ. FT.  
+ 96 SQ. FT. FINISHED BASEMENT (OPT. +234 SQ. FT.)

### SECOND FLOOR ELEVATION B



ELEVATOR PLAN  
AVAILABLE!  
SCAN TO VIEW.

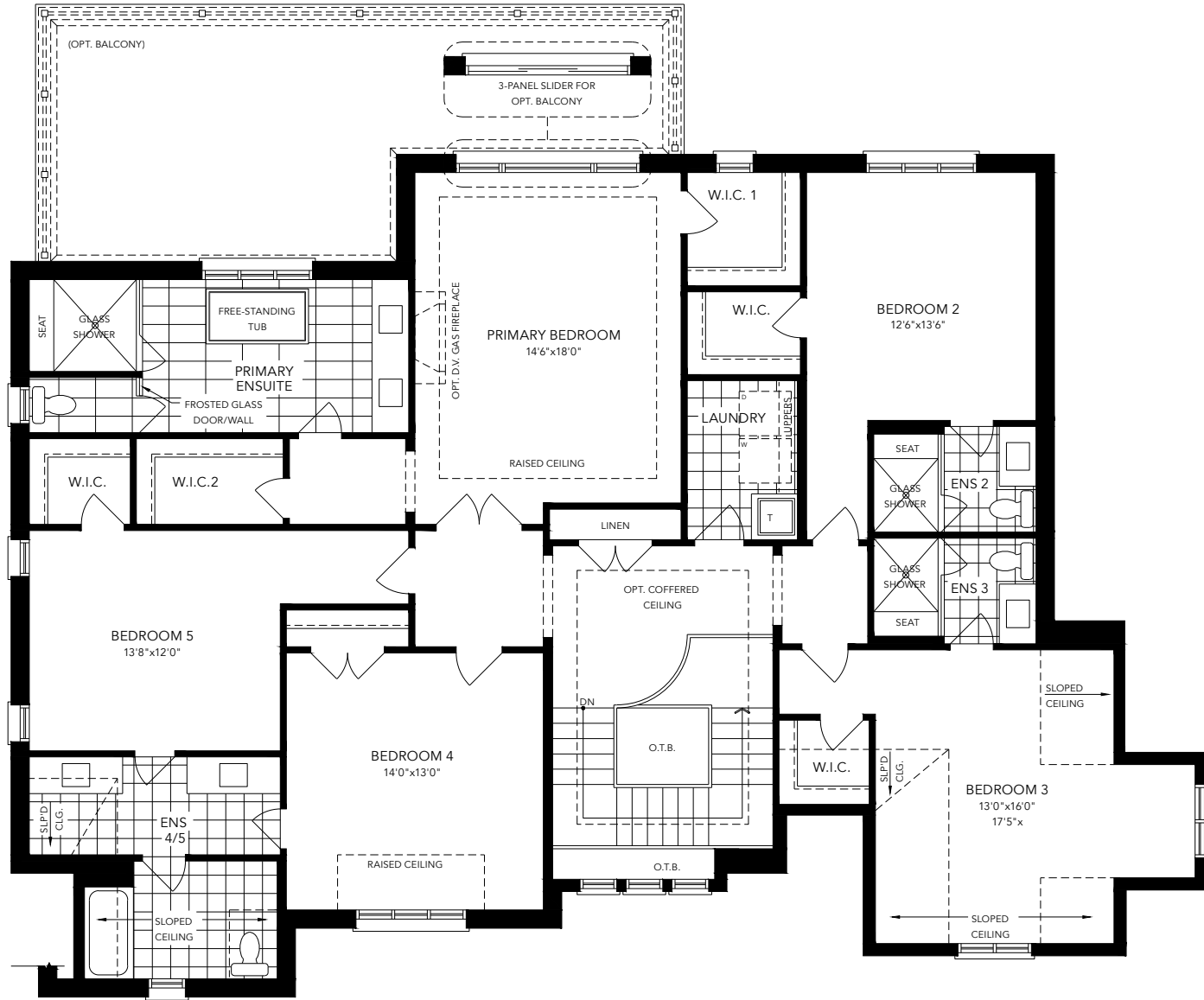
# THE JACK PINE TS-04

## 2-Storey Detached

4,390 SQ. FT.

+ 96 SQ. FT. FINISHED BASEMENT (OPT. +234 SQ. FT.)

### SECOND FLOOR - OPTIONAL WITH 5 BEDROOM ELEVATION B



ELEVATOR PLAN  
AVAILABLE!  
SCAN TO VIEW.

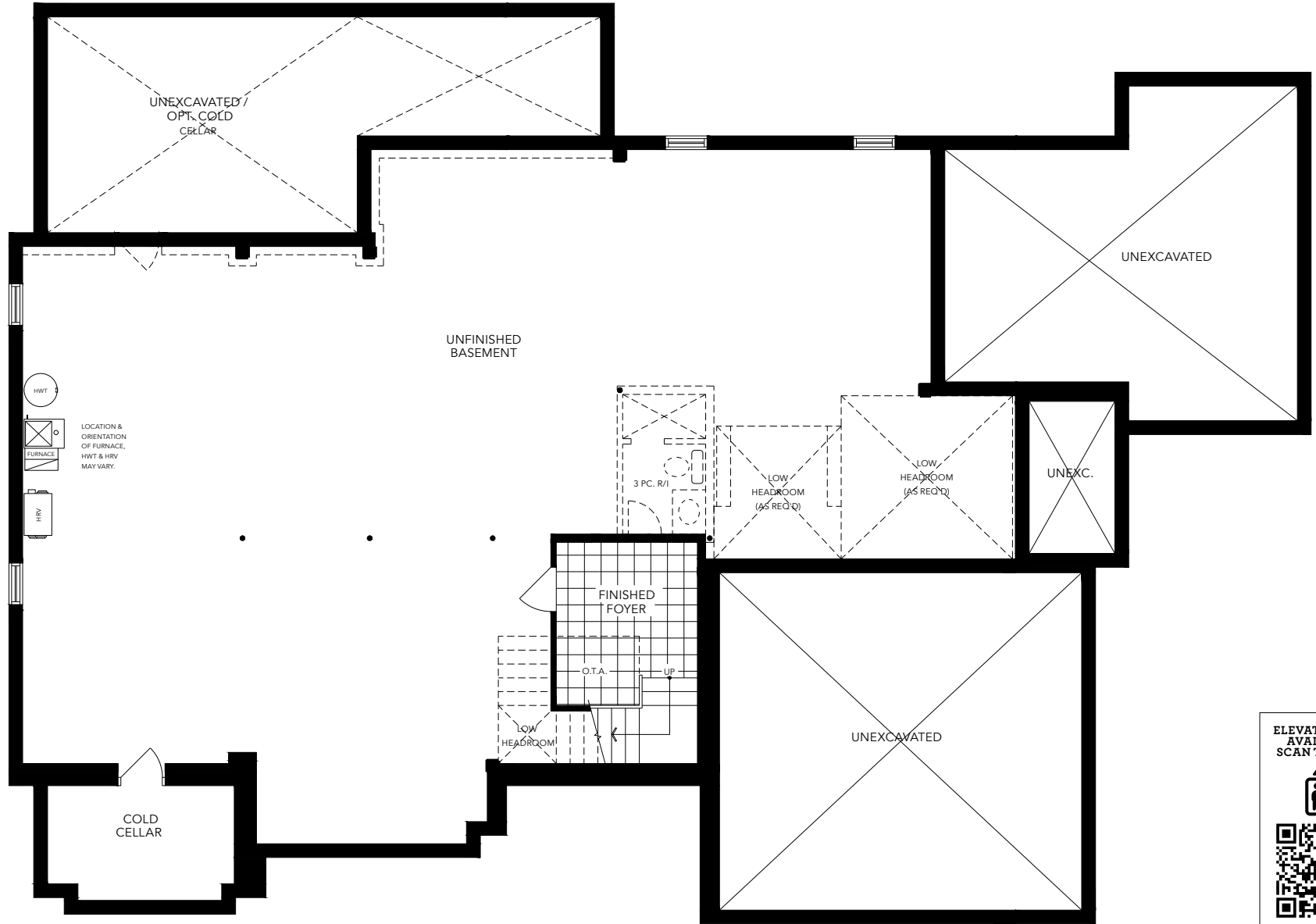


# THE JACK PINE TS-04

## 2-Storey Detached

4,390 SQ. FT.  
+ 96 SQ. FT. FINISHED BASEMENT (OPT. +234 SQ. FT.)

### BASMENT ELEVATION B



# THE JACK PINE TS-04

## 2-Storey Detached

### ELEVATION C

4,322 SQ. FT.

+ 96 SQ. FT. FINISHED BASEMENT (OPT. +234 SQ. FT.)



# CLAREHAVEN

ESTATES

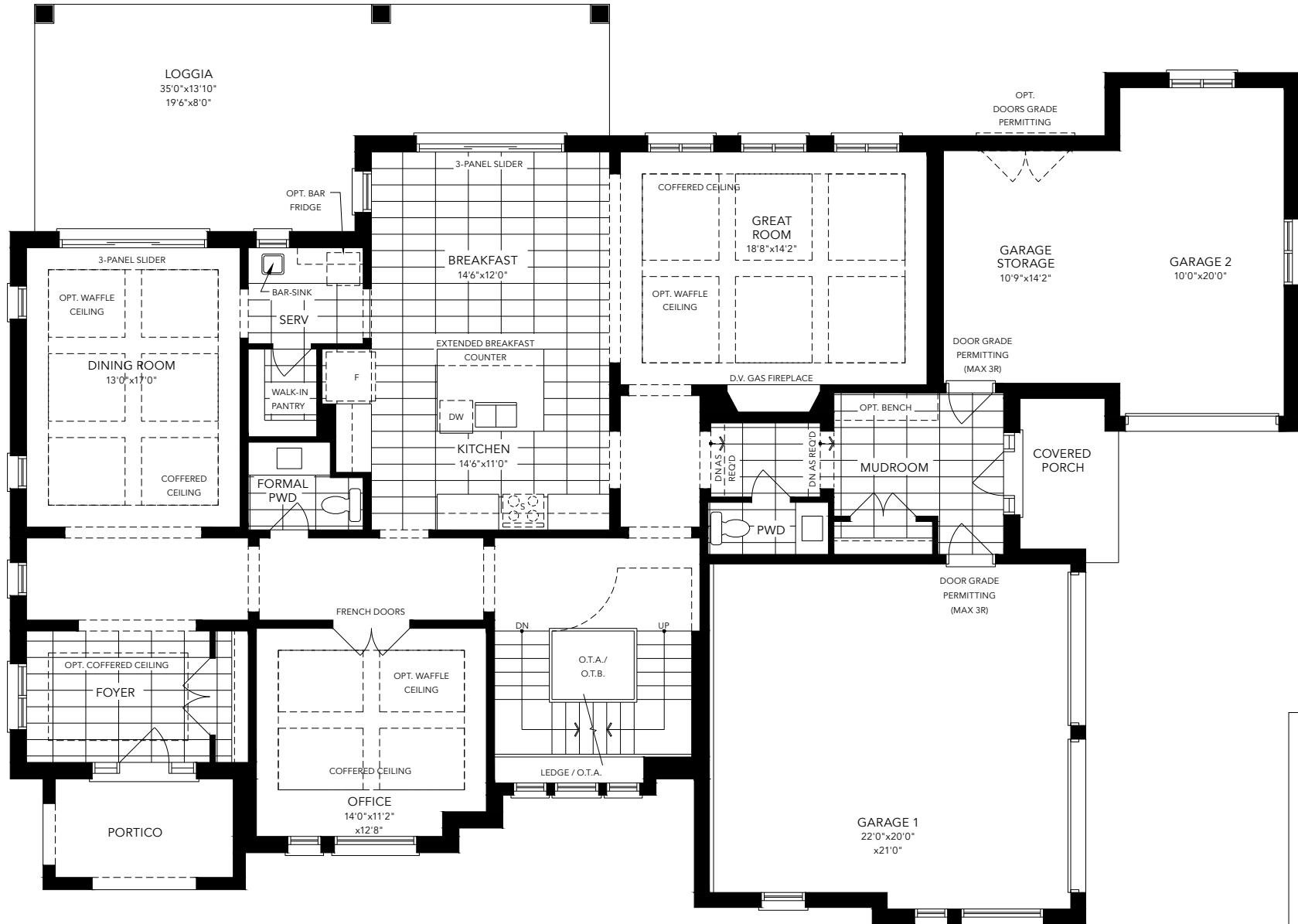


# THE JACK PINE TS-04

## 2-Storey Detached

4,322 SQ. FT.  
+ 96 SQ. FT. FINISHED BASEMENT (OPT. +234 SQ. FT.)

### GROUND FLOOR ELEVATION C



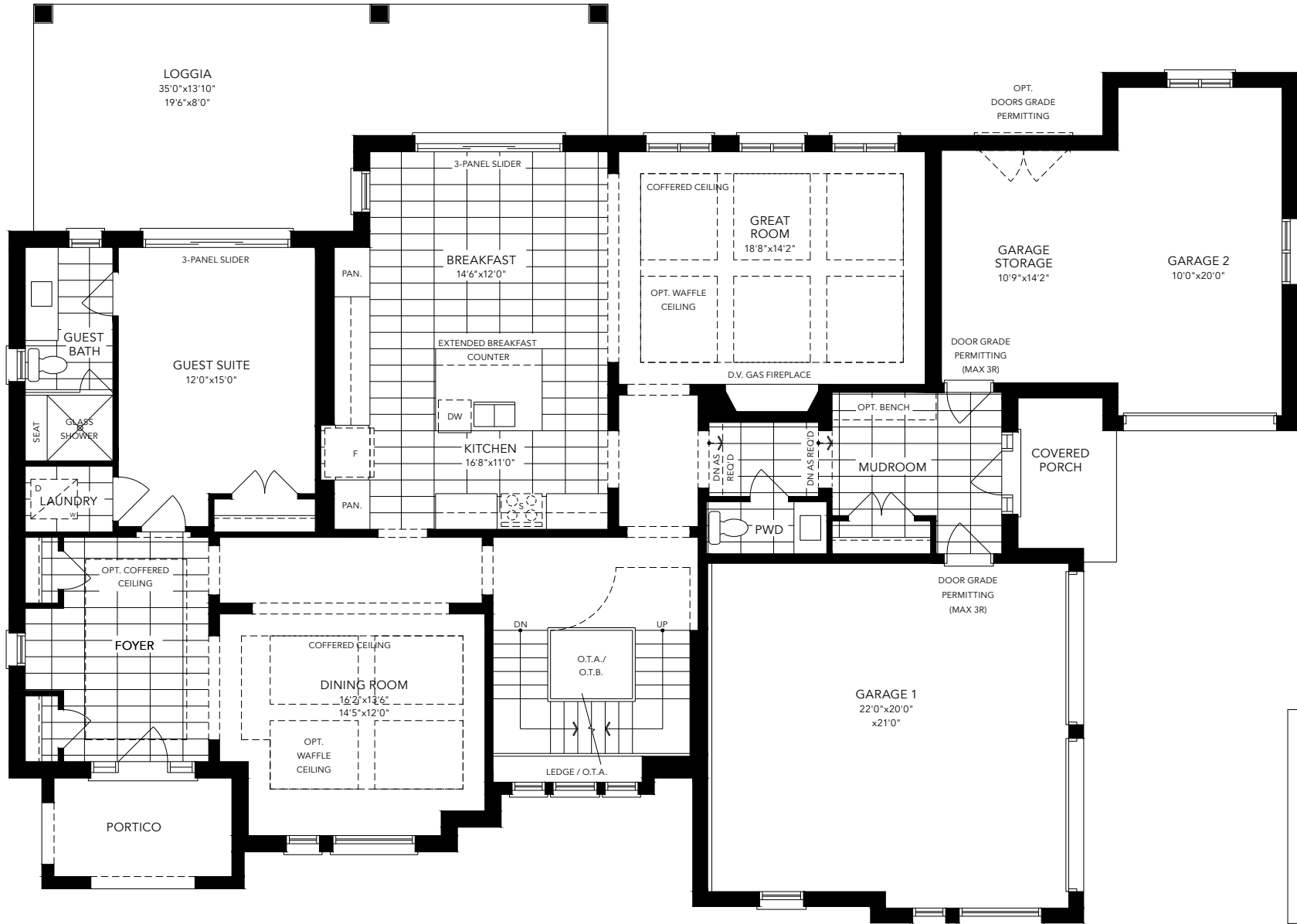
ELEVATOR PLAN  
AVAILABLE!  
SCAN TO VIEW.

# THE JACK PINE TS-04

## 2-Storey Detached

4,322 SQ. FT.  
+ 96 SQ. FT. FINISHED BASEMENT (OPT. +234 SQ. FT.)

### GROUND FLOOR - OPTIONAL WITH GUEST SUITE ELEVATION C



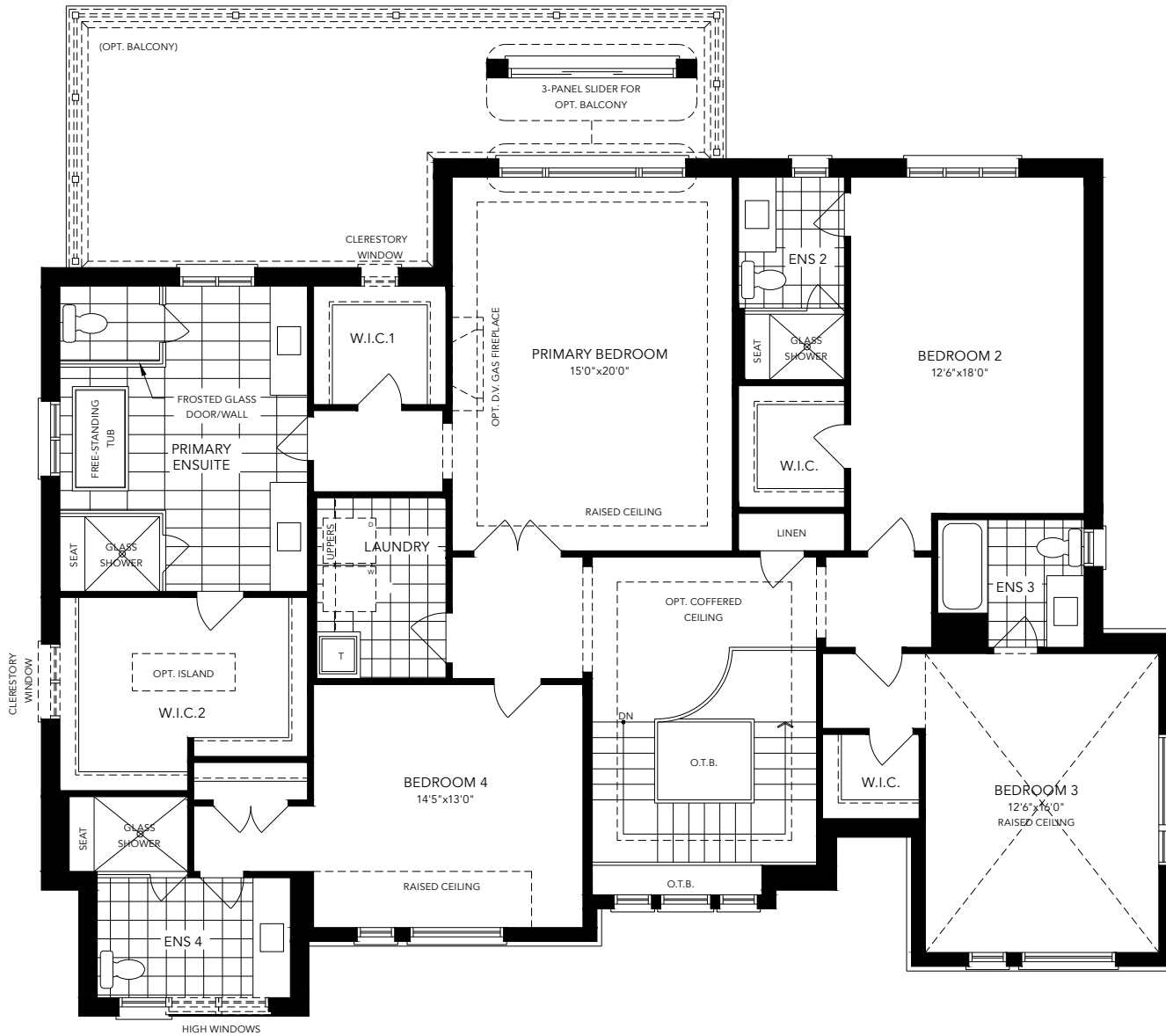
# THE JACK PINE TS-04

## 2-Storey Detached

4,322 SQ. FT.

+ 96 SQ. FT. FINISHED BASEMENT (OPT. +234 SQ. FT.)

### SECOND FLOOR ELEVATION C



ELEVATOR PLAN  
AVAILABLE!  
SCAN TO VIEW.





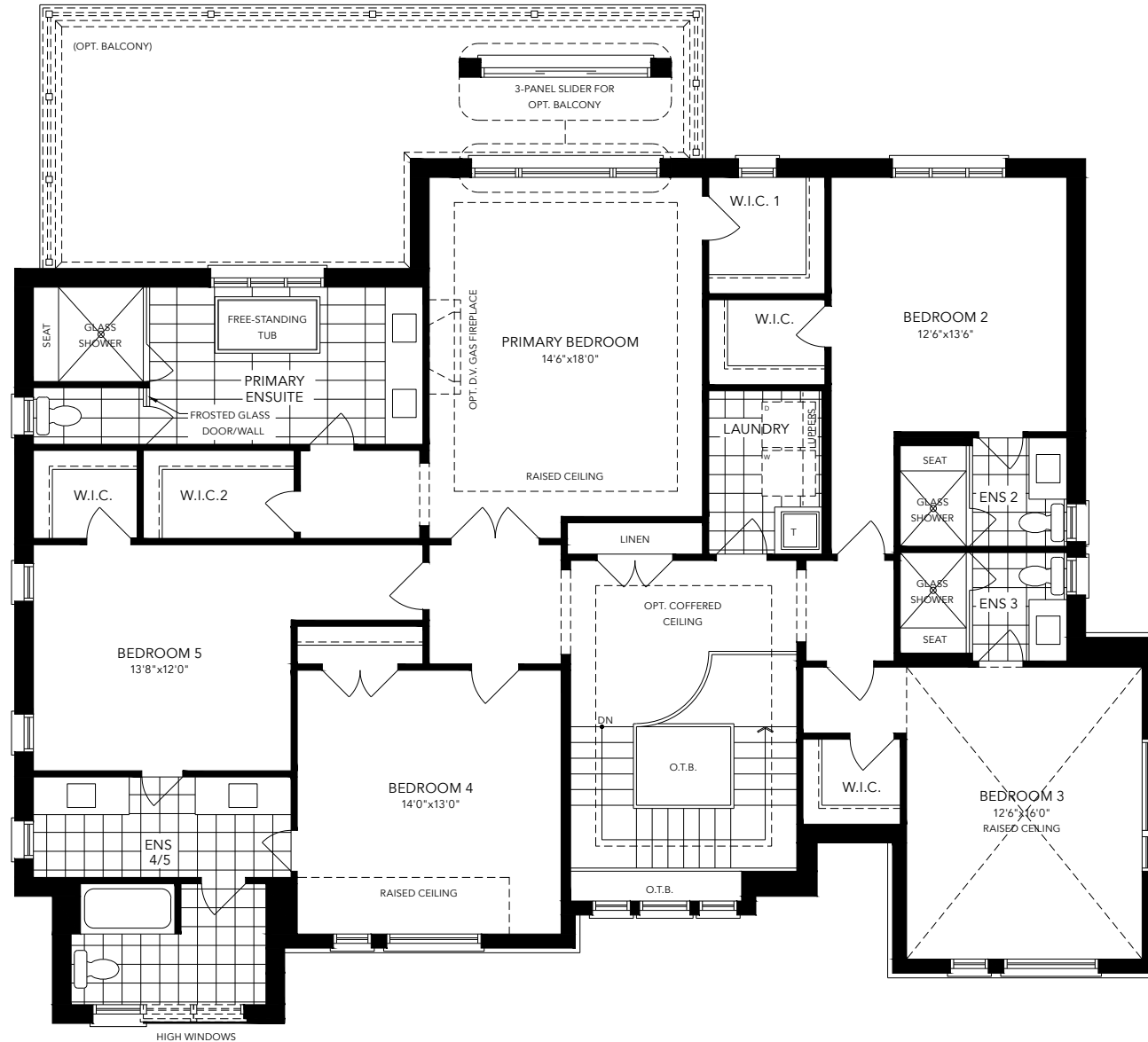
# THE JACK PINE TS-04

## 2-Storey Detached

4,322 SQ. FT.

+ 96 SQ. FT. FINISHED BASEMENT (OPT. +234 SQ. FT.)

### SECOND FLOOR - OPTIONAL WITH 5 BEDROOM ELEVATION C



ELEVATOR PLAN  
AVAILABLE!  
SCAN TO VIEW.

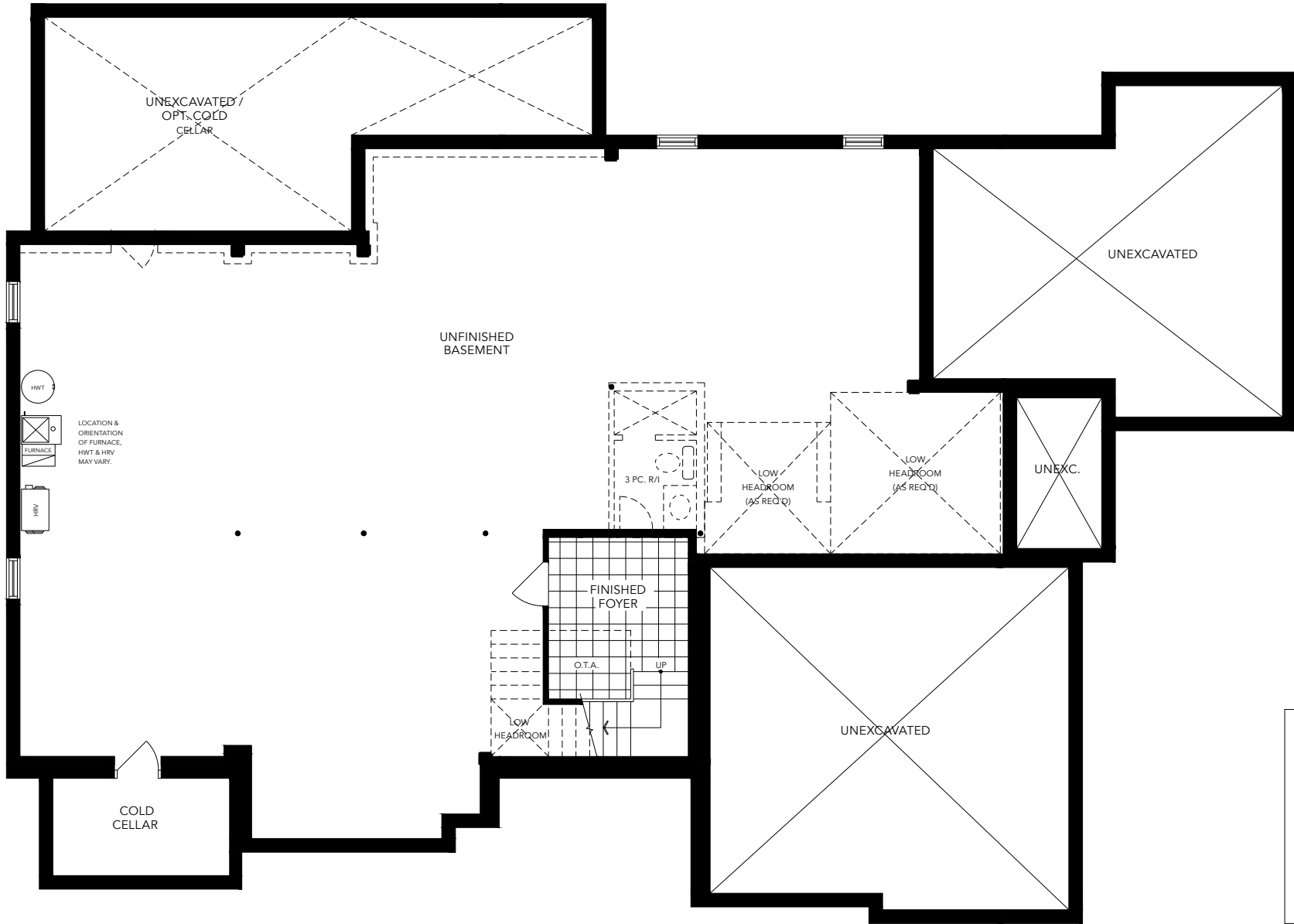


# THE JACK PINE TS-04

## 2-Storey Detached

4,322 SQ. FT.  
+ 96 SQ. FT. FINISHED BASEMENT (OPT. +234 SQ. FT.)

### BASEMENT ELEVATION C



ELEVATOR PLAN AVAILABLE! SCAN TO VIEW.



# CLAREHAVEN

ESTATES

Welcome to a curated collection of 70 country chic estate homes, located in north Pickering. These exquisite homes are situated on spacious lots of up to one acre, offering ample space for you and your family to enjoy. With an emphasis on elegance and comfort, these homes are designed to impress, featuring stunning architectural details, modern amenities, and a serene natural setting.

[ClareHavenEstates.com](http://ClareHavenEstates.com)

Builder reserves the right to substitute materials for equal or better quality. Prices, any lot premiums, features and any applicable incentives referred to are subject to change without notice. Lot sizes, square footages and room dimensions are approximate and are subject to change without notice. Please refer to Schedule 'B' and 'C' of the Agreement of Purchase and Sale for full details. Illustrations and photographs included may be upgrade features and/or Artist's concept. October, 2023. E.60.E.

## **It's your home. And, we take pride in it.**

Since 1977, Geranium has designed and built homes with sensitivity and respect for the environment, the local neighbourhood, and the families who will call them home. That's just one reason why we've won hundreds of homebuilding awards for craftsmanship and care since our founding in 1977. It's also the reason why we are the proud recipients of the 2021 Durham Region Builder of the Year Award.



[geranium.com](http://geranium.com)