



BELWOOD  
ESTATES



1

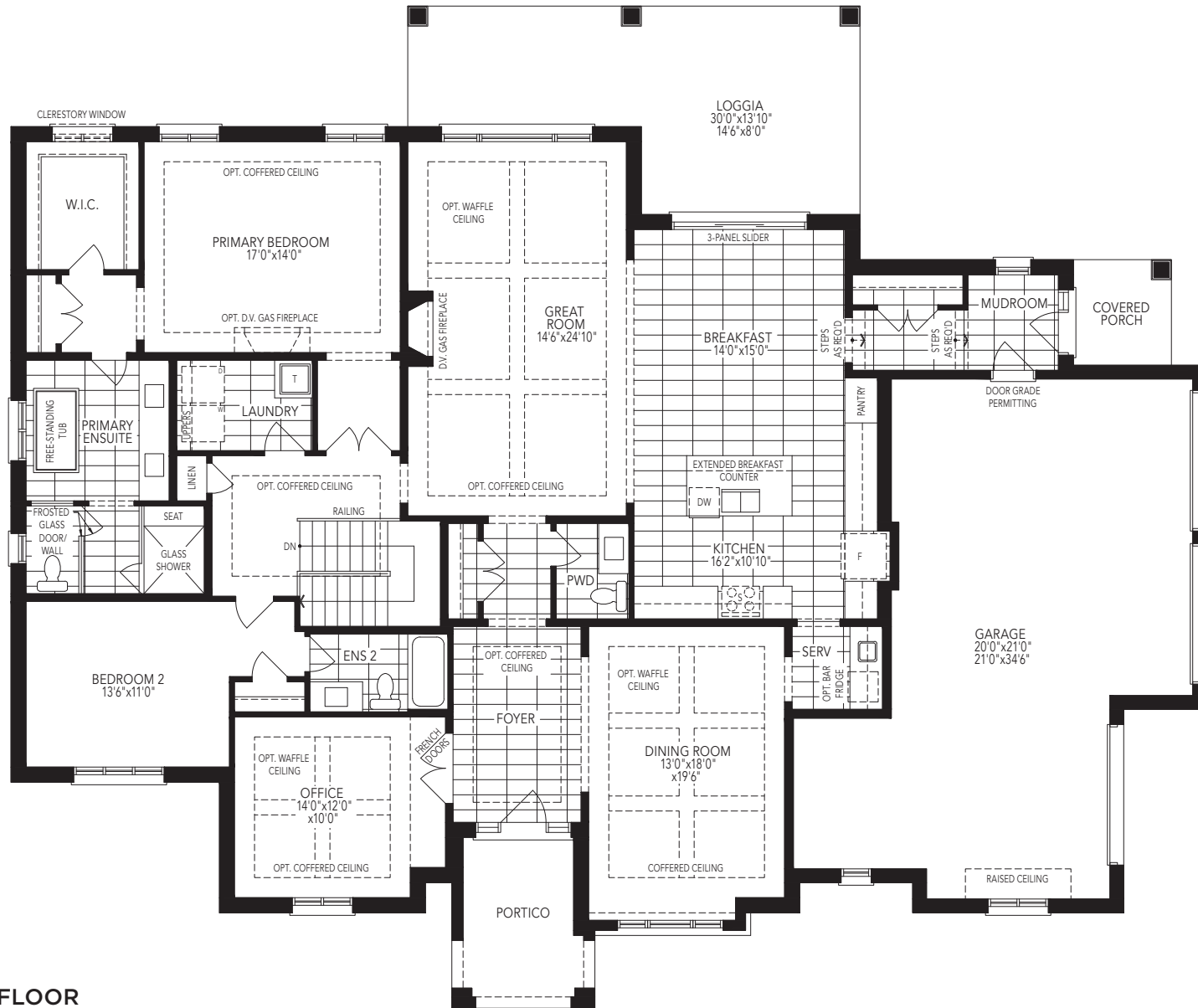
## The Victoria B-02

**ELEVATION A** | 2,816 SQ. FT. | 3,677 SQ. FT. OPT. LOFT  
+76 SQ. FT. FIN. BASEMENT

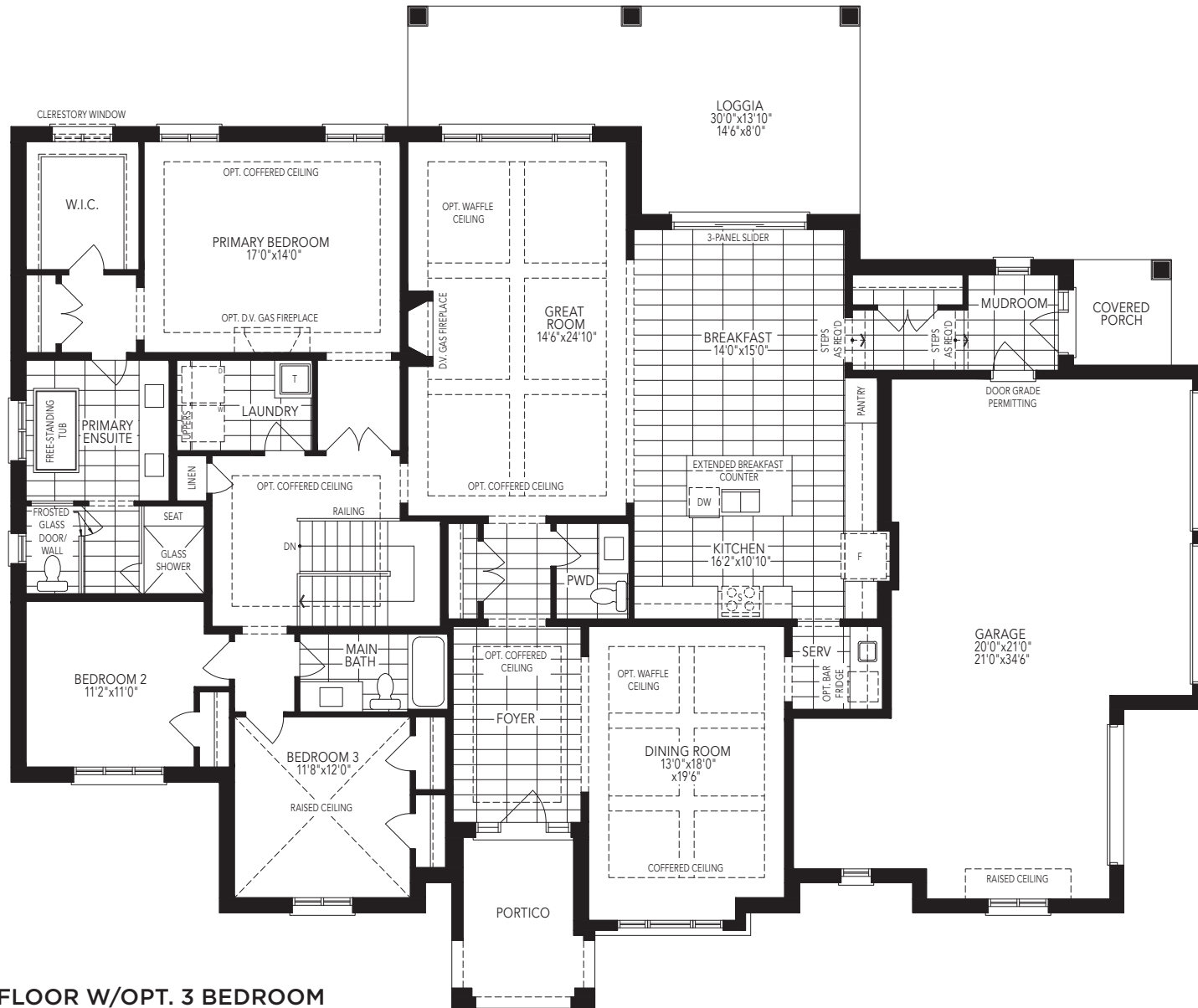
**GERANIUM**  
*From the ground up™*

Builder reserves the right to substitute materials for equal or better quality. Prices, any lot premiums, features and any applicable incentives referred to are subject to change without notice. Lot sizes, square footages and room dimensions are approximate and are subject to change without notice. Please refer to Schedule 'B' and 'C' of the Agreement of Purchase and Sale for full details. Illustrations and photographs included may be upgrade features and/or Artist's concept. September, 2024. E.&O.E. B-02\_A

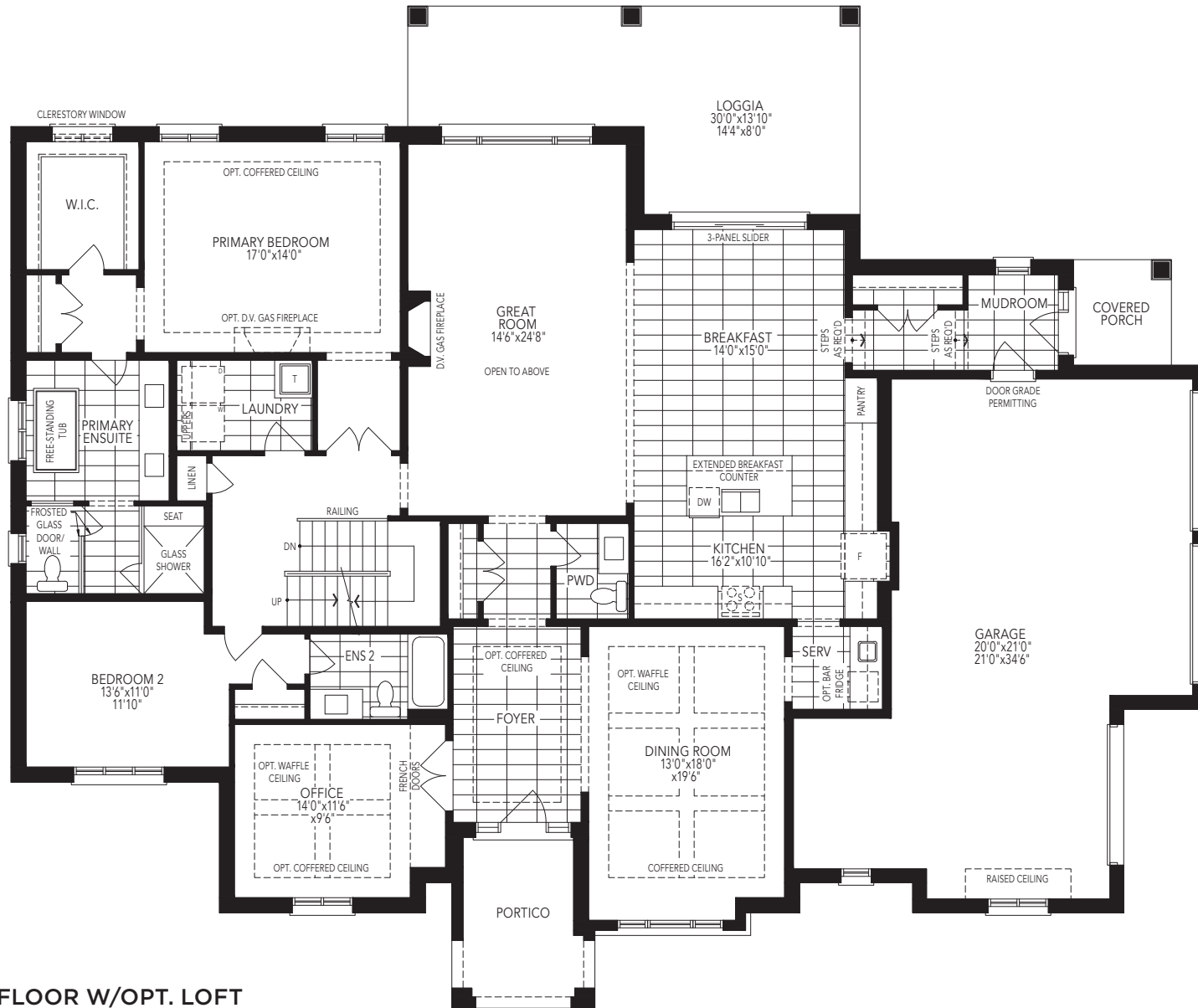




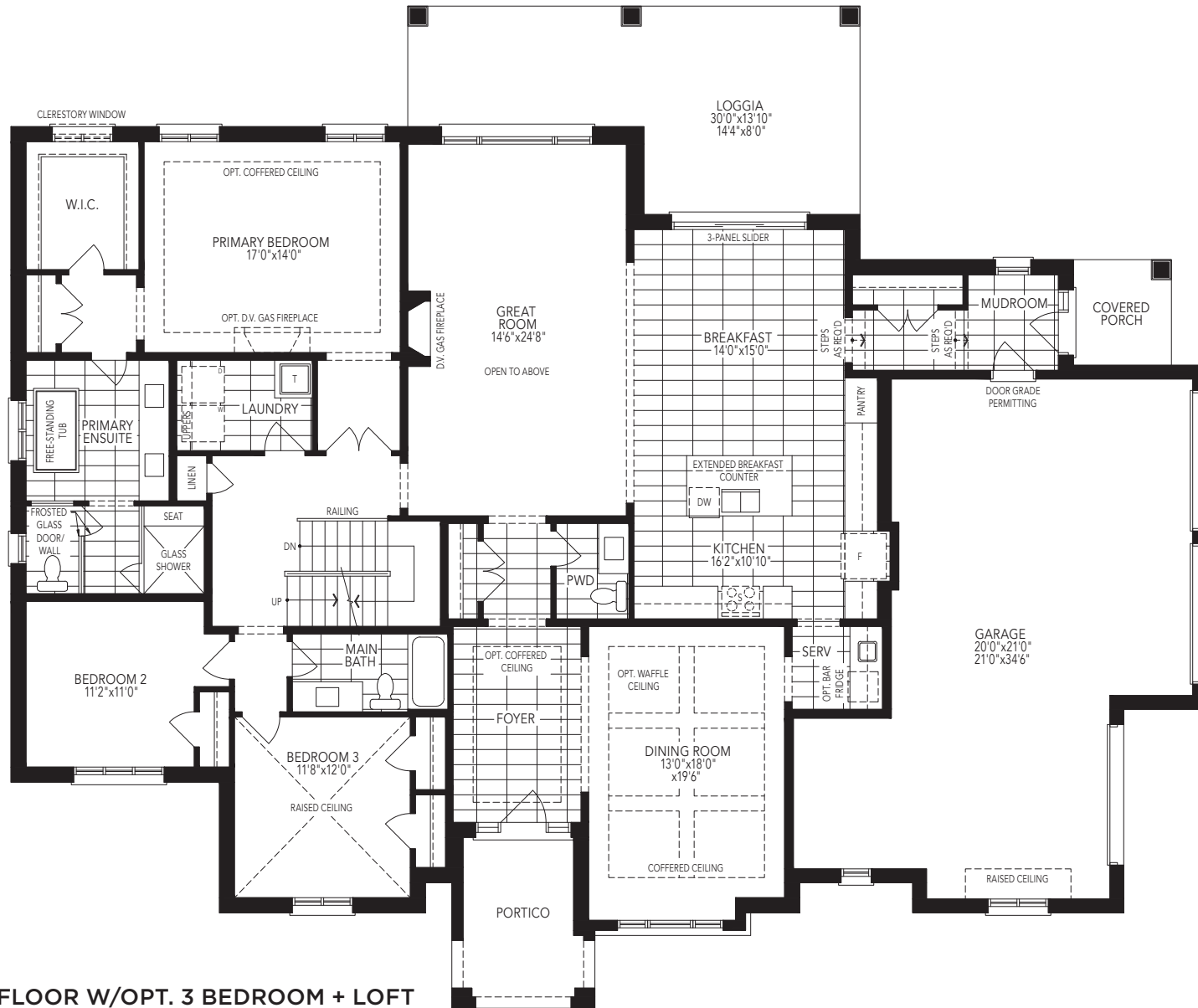
**GROUND FLOOR  
ELEVATION A**



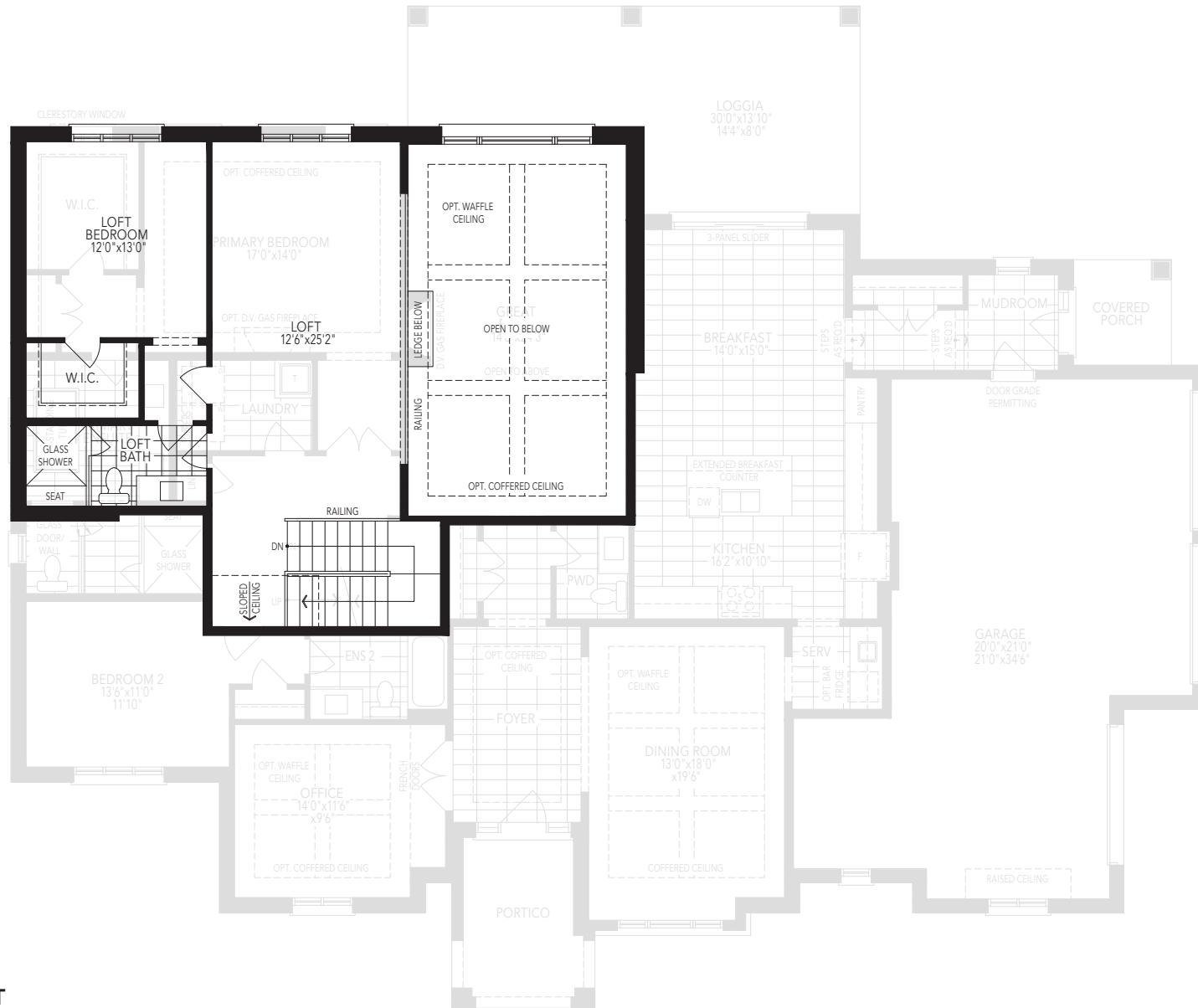
**GROUND FLOOR W/OPT. 3 BEDROOM  
ELEVATION A**



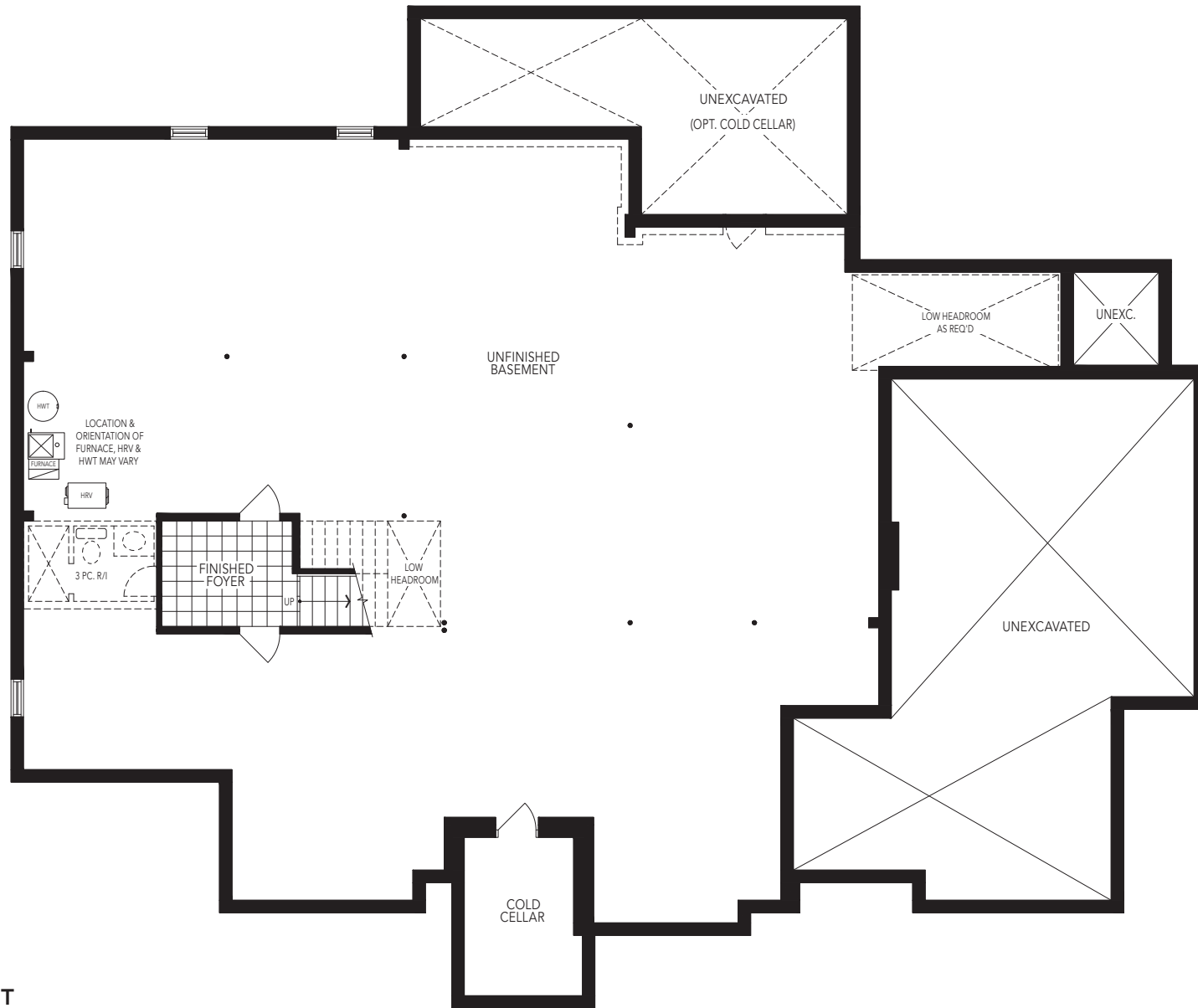
**GROUND FLOOR W/OPT. LOFT  
ELEVATION A**



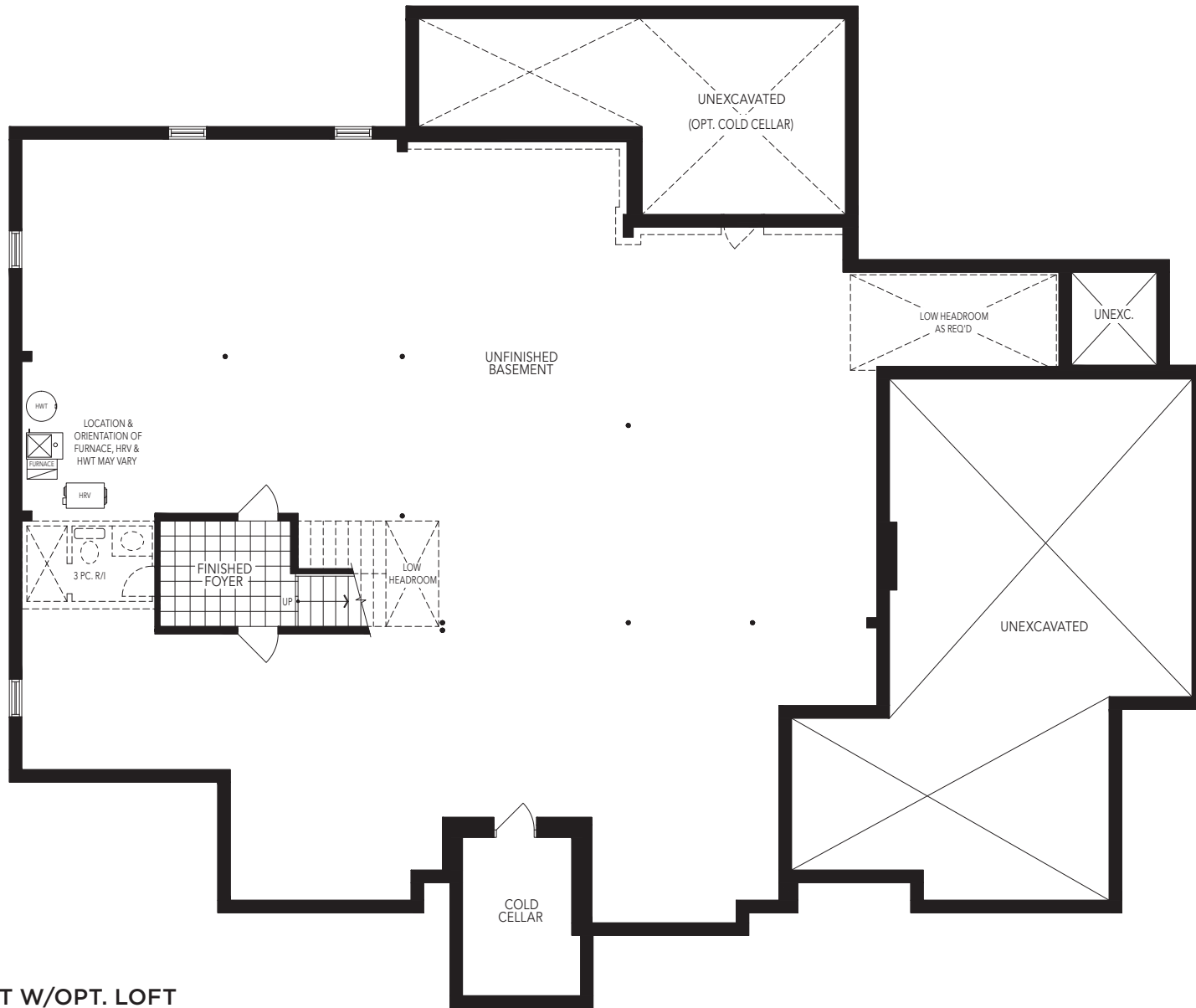
**GROUND FLOOR W/OPT. 3 BEDROOM + LOFT  
ELEVATION A**



**OPT. LOFT  
ELEVATION A**



**BASEMENT  
ELEVATION A**



**BASEMENT W/OPT. LOFT  
ELEVATION A**





BELWOOD  
ESTATES



1

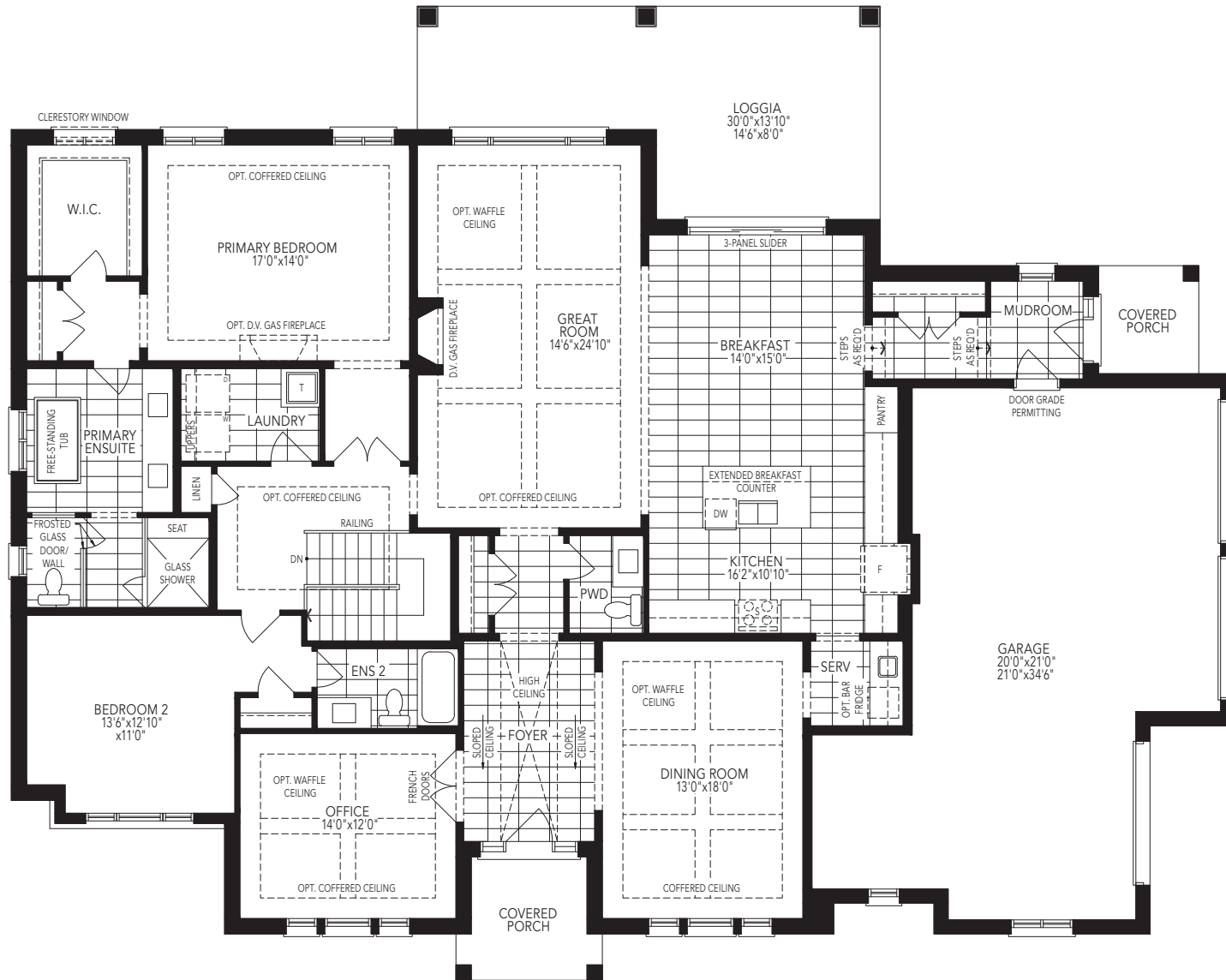
## The Victoria B-02

**ELEVATION B** | 2,826 SQ. FT. | 3,685 SQ. FT. OPT. LOFT  
+76 SQ. FT. FIN. BASEMENT

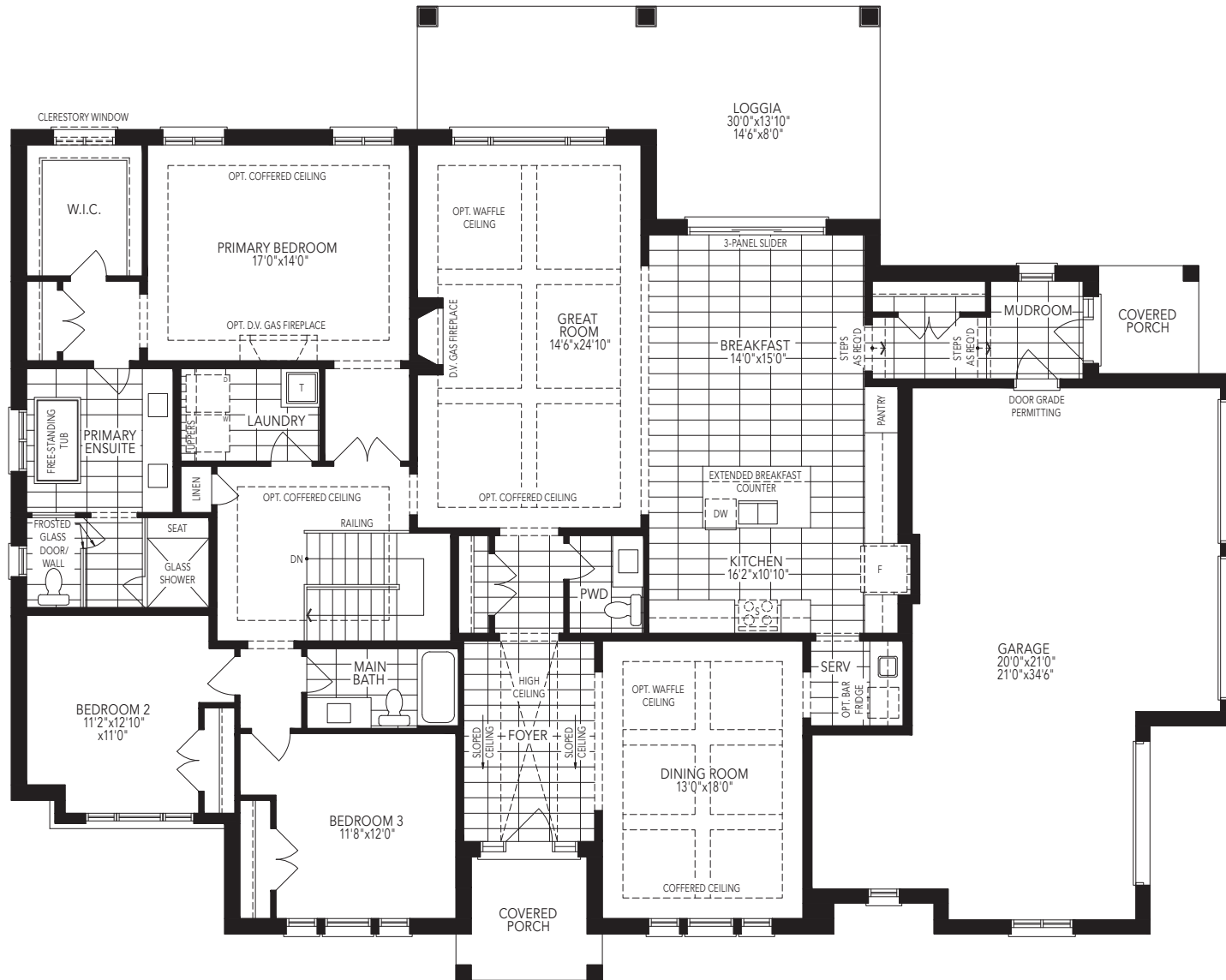
**GERANIUM**  
From the ground up™

Builder reserves the right to substitute materials for equal or better quality. Prices, any lot premiums, features and any applicable incentives referred to are subject to change without notice. Lot sizes, square footages and room dimensions are approximate and are subject to change without notice. Please refer to Schedule 'B' and 'C' of the Agreement of Purchase and Sale for full details. Illustrations and photographs included may be upgrade features and/or Artist's concept. September, 2024, E.&O.E. B-02\_B

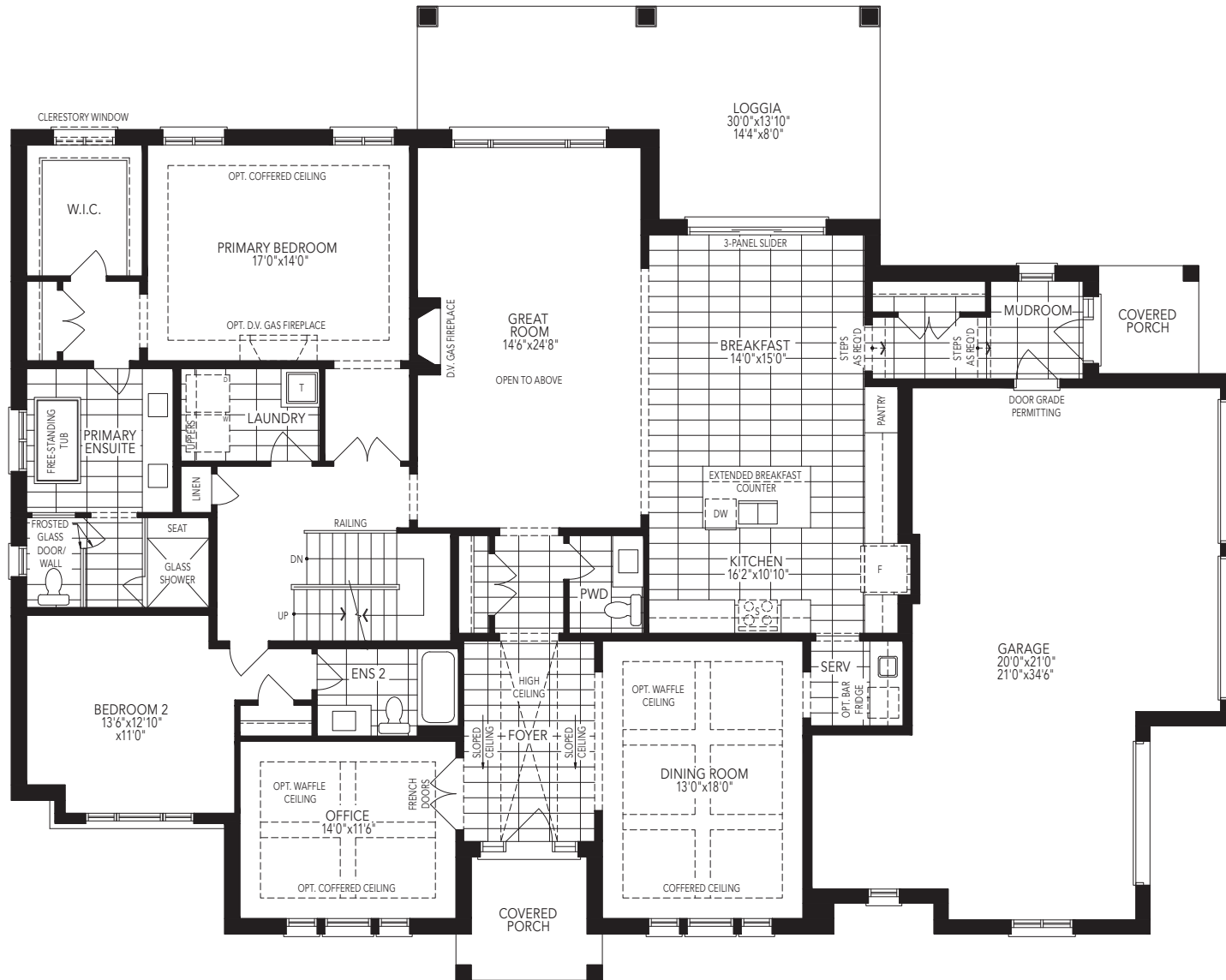




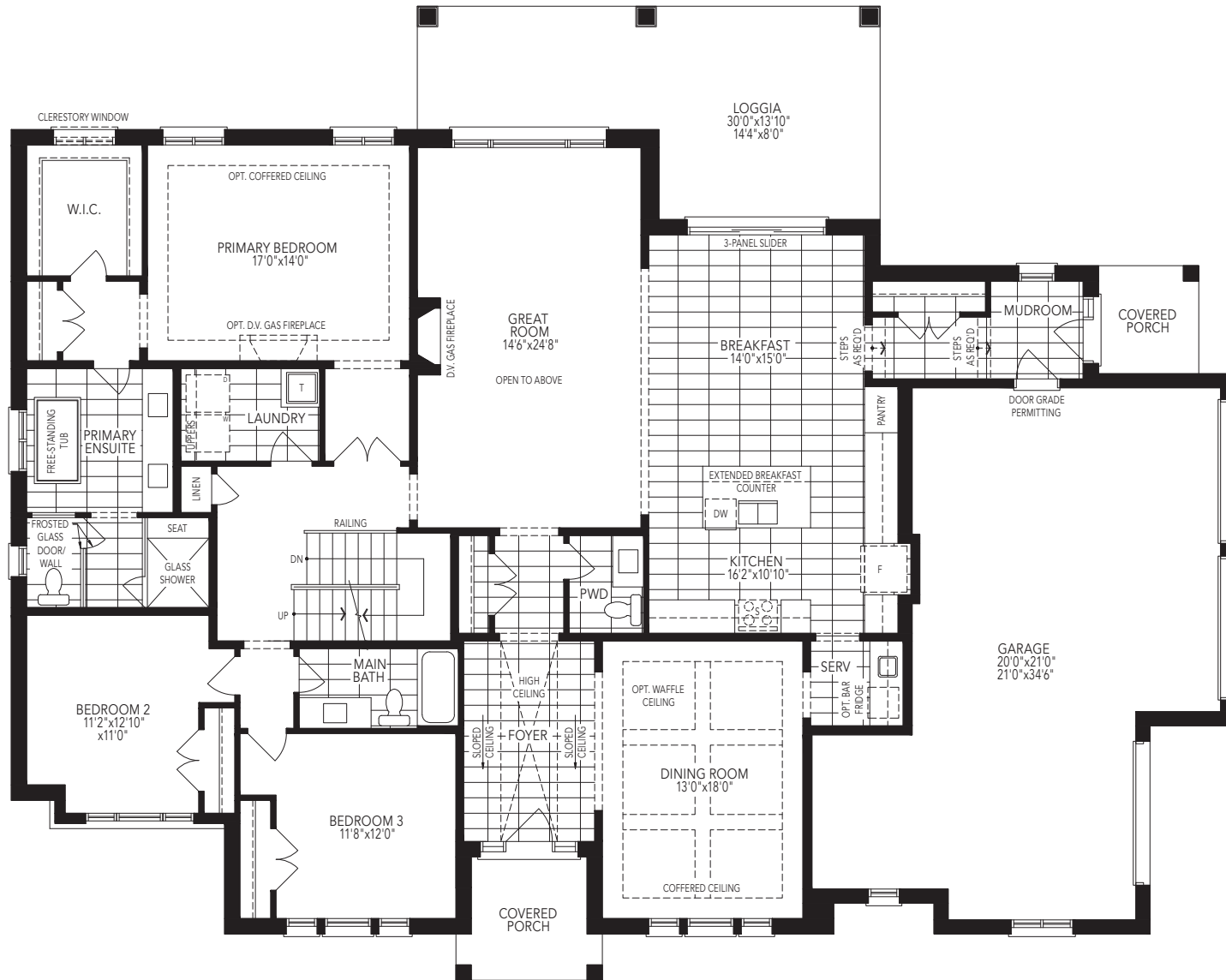
**GROUND FLOOR  
ELEVATION B**



**GROUND FLOOR W/OPT. 3 BEDROOM  
ELEVATION B**

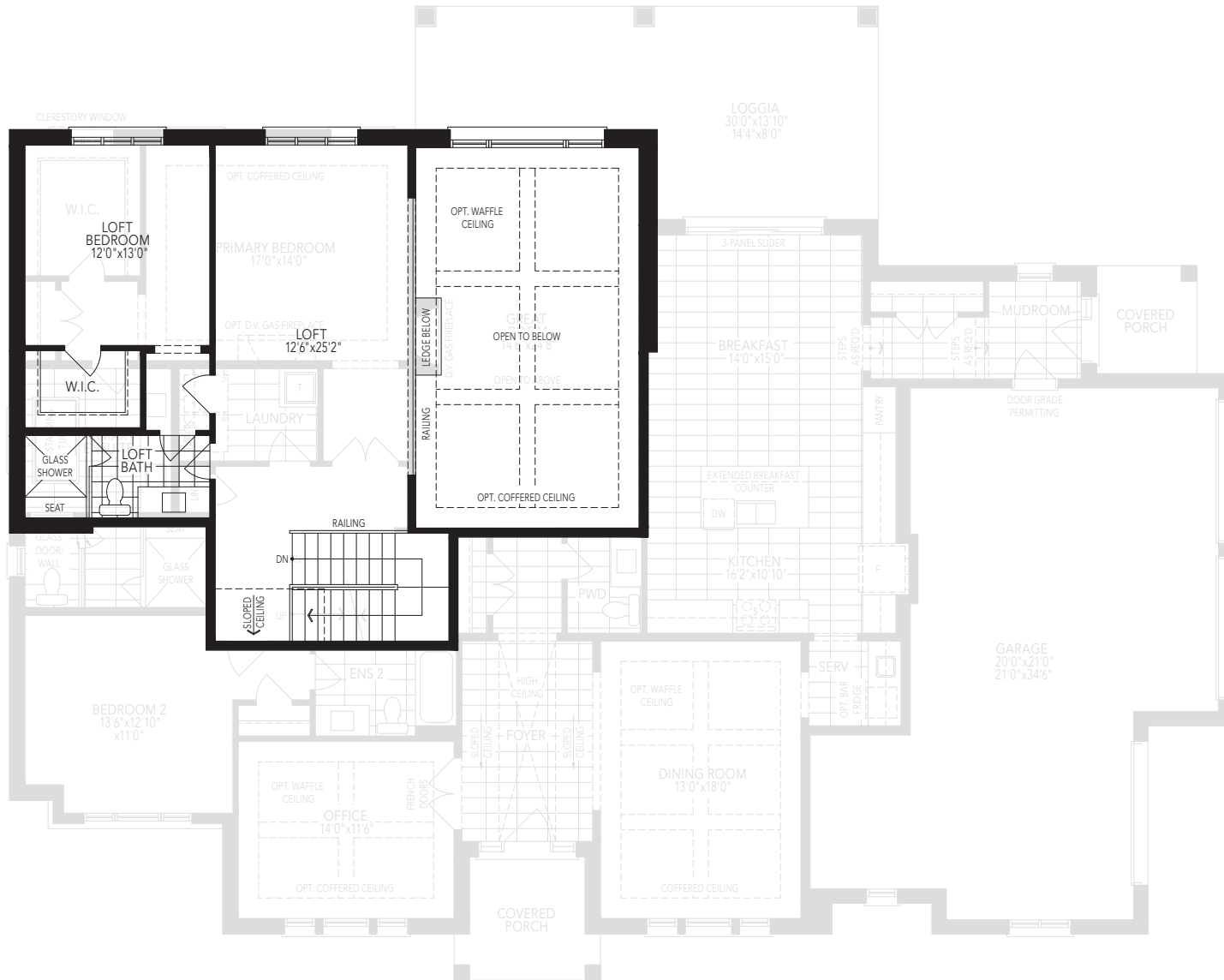


**GROUND FLOOR W/OPT. LOFT  
ELEVATION B**

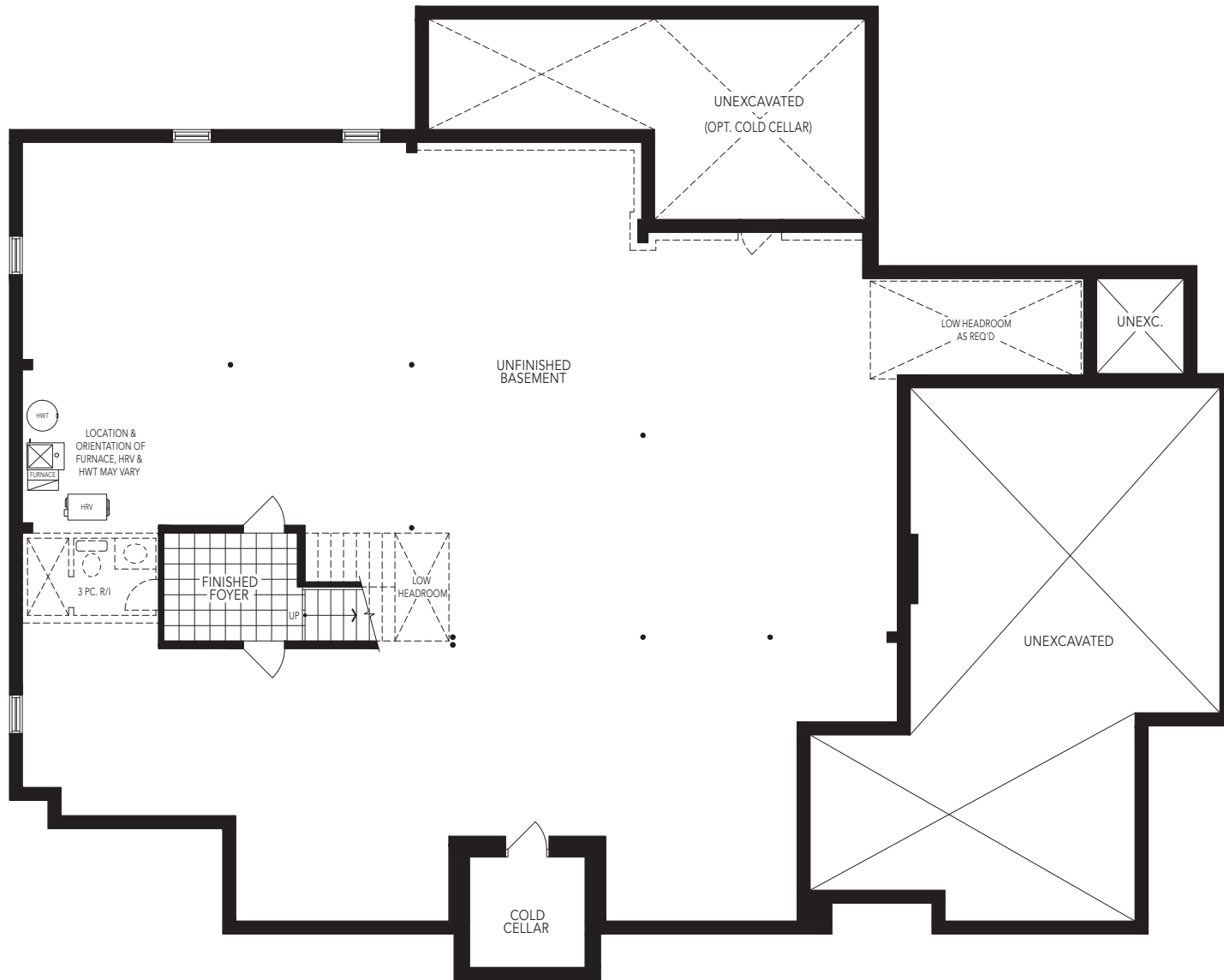


**GROUND FLOOR W/OPT. 3 BEDROOM + LOFT  
ELEVATION B**

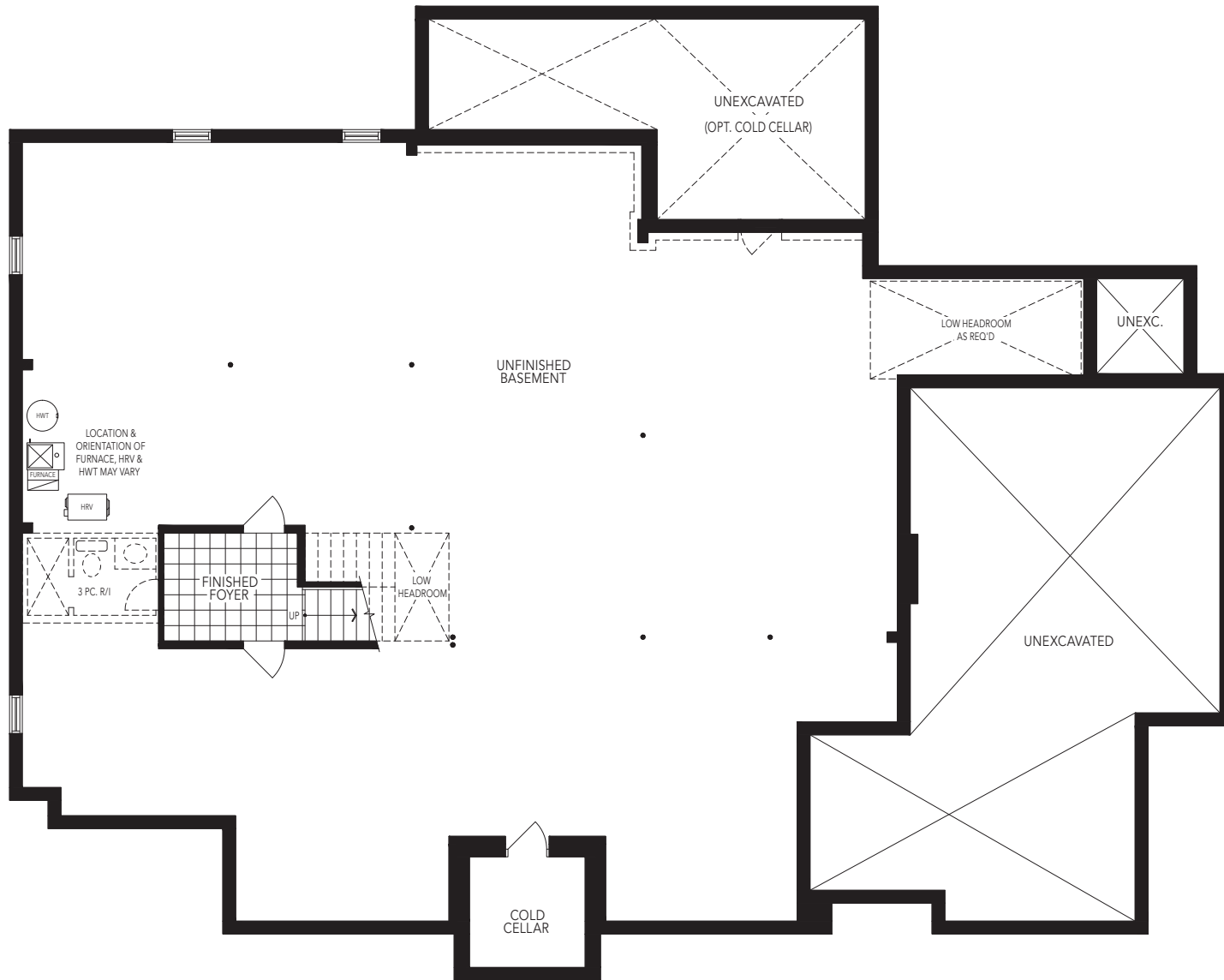




**OPT. LOFT  
ELEVATION B**



**BASEMENT  
ELEVATION B**



**BASEMENT W/OPT. LOFT  
ELEVATION B**





BELWOOD  
ESTATES



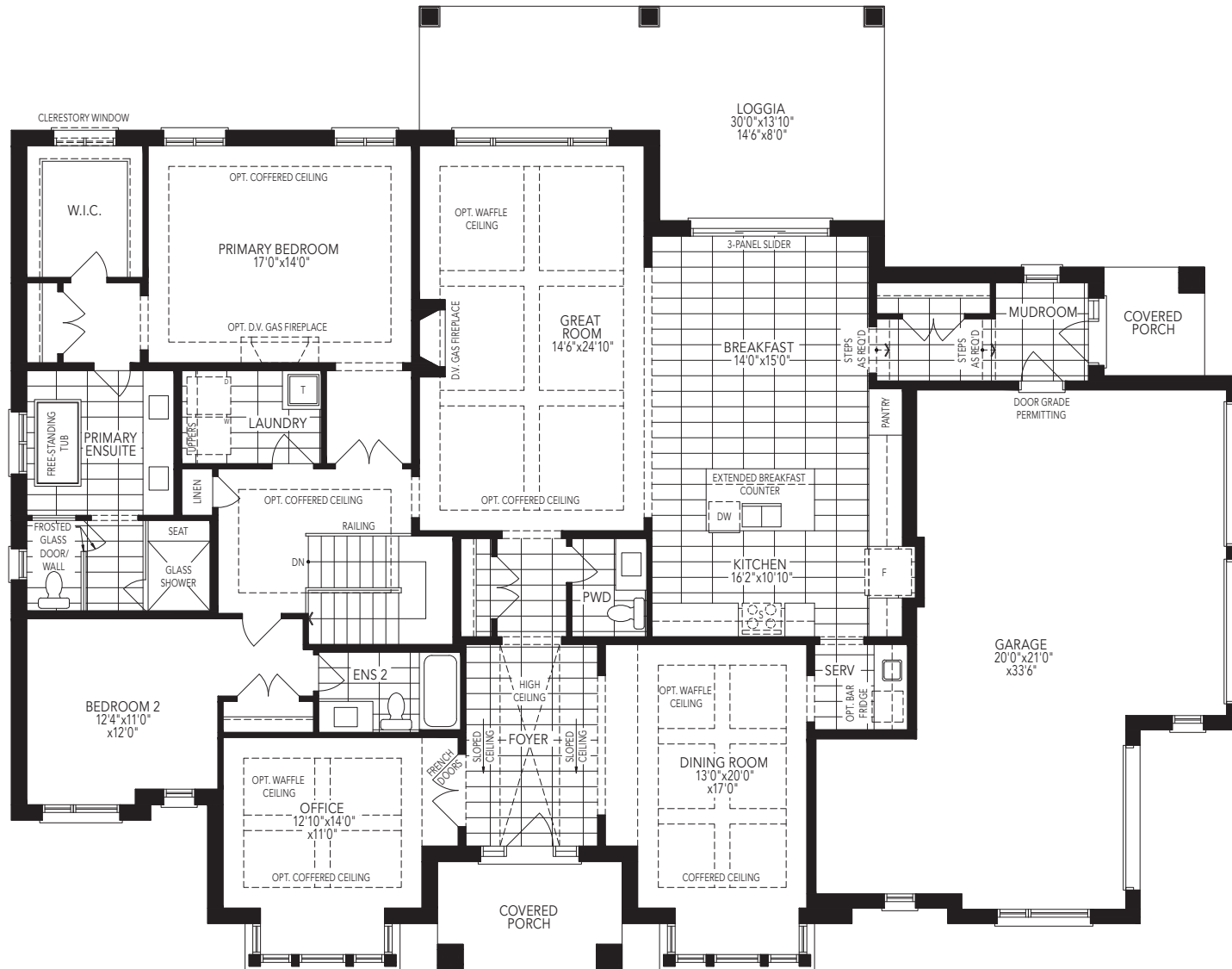
1

## The Victoria B-02

**ELEVATION C** | 2,831 SQ. FT. | 3,694 SQ. FT. OPT. LOFT  
+76 SQ. FT. FIN. BASEMENT

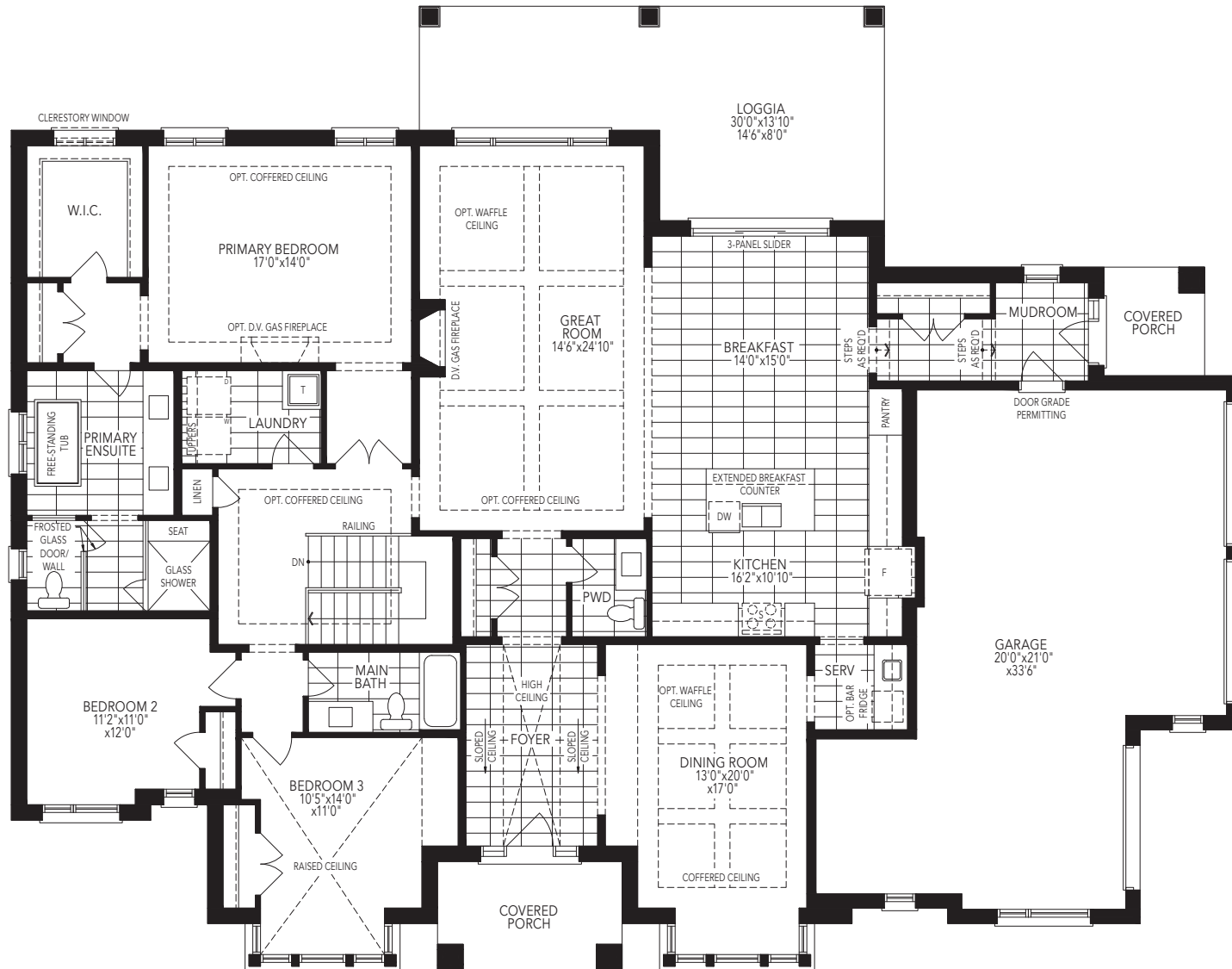
**GERANIUM**  
From the ground up™

Builder reserves the right to substitute materials for equal or better quality. Prices, any lot premiums, features and any applicable incentives referred to are subject to change without notice. Lot sizes, square footages and room dimensions are approximate and are subject to change without notice. Please refer to Schedule 'B' and 'C' of the Agreement of Purchase and Sale for full details. Illustrations and photographs included may be upgrade features and/or Artist's concept. September, 2024. E.&O.E. B-02\_C

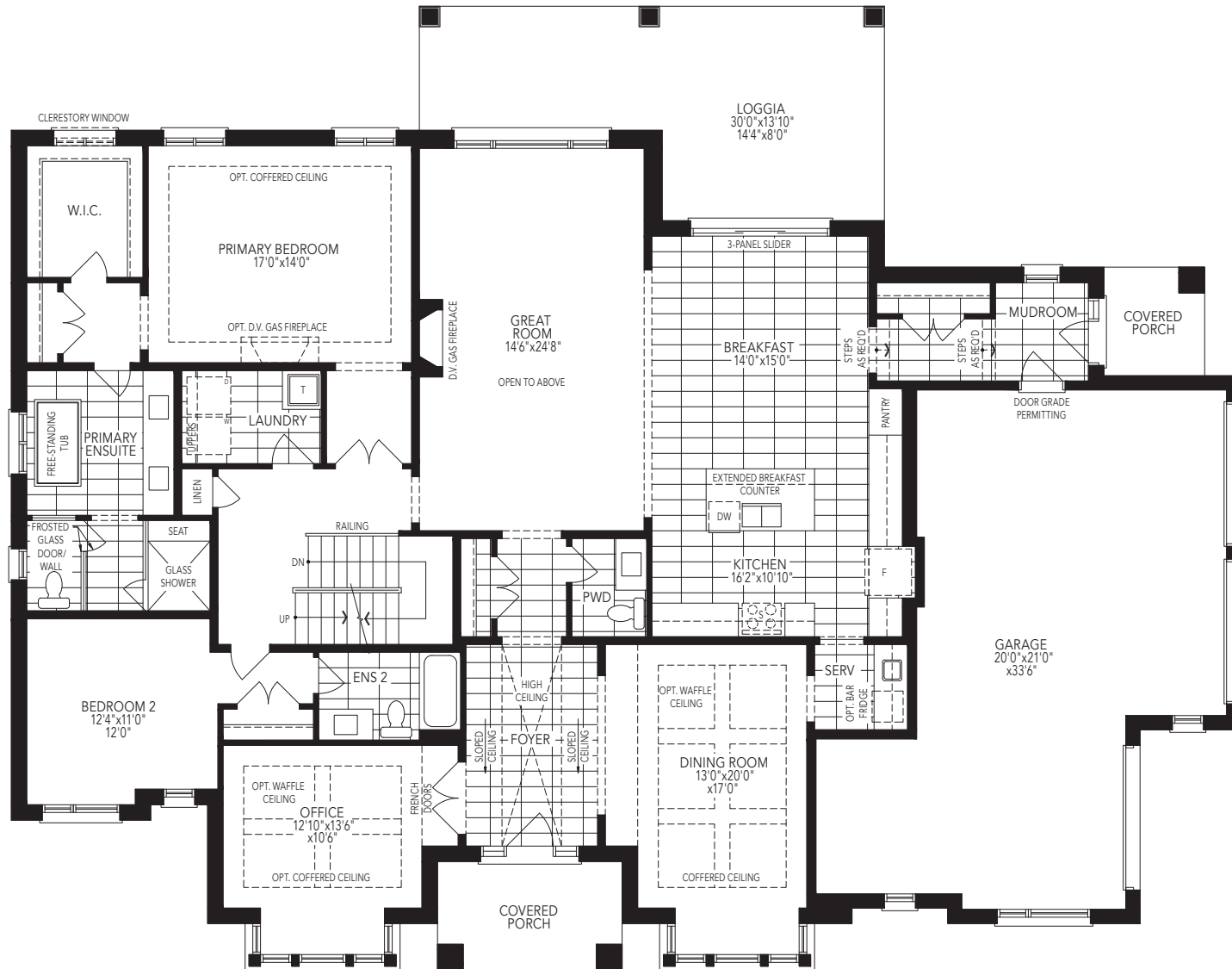


**GROUND FLOOR  
ELEVATION C**

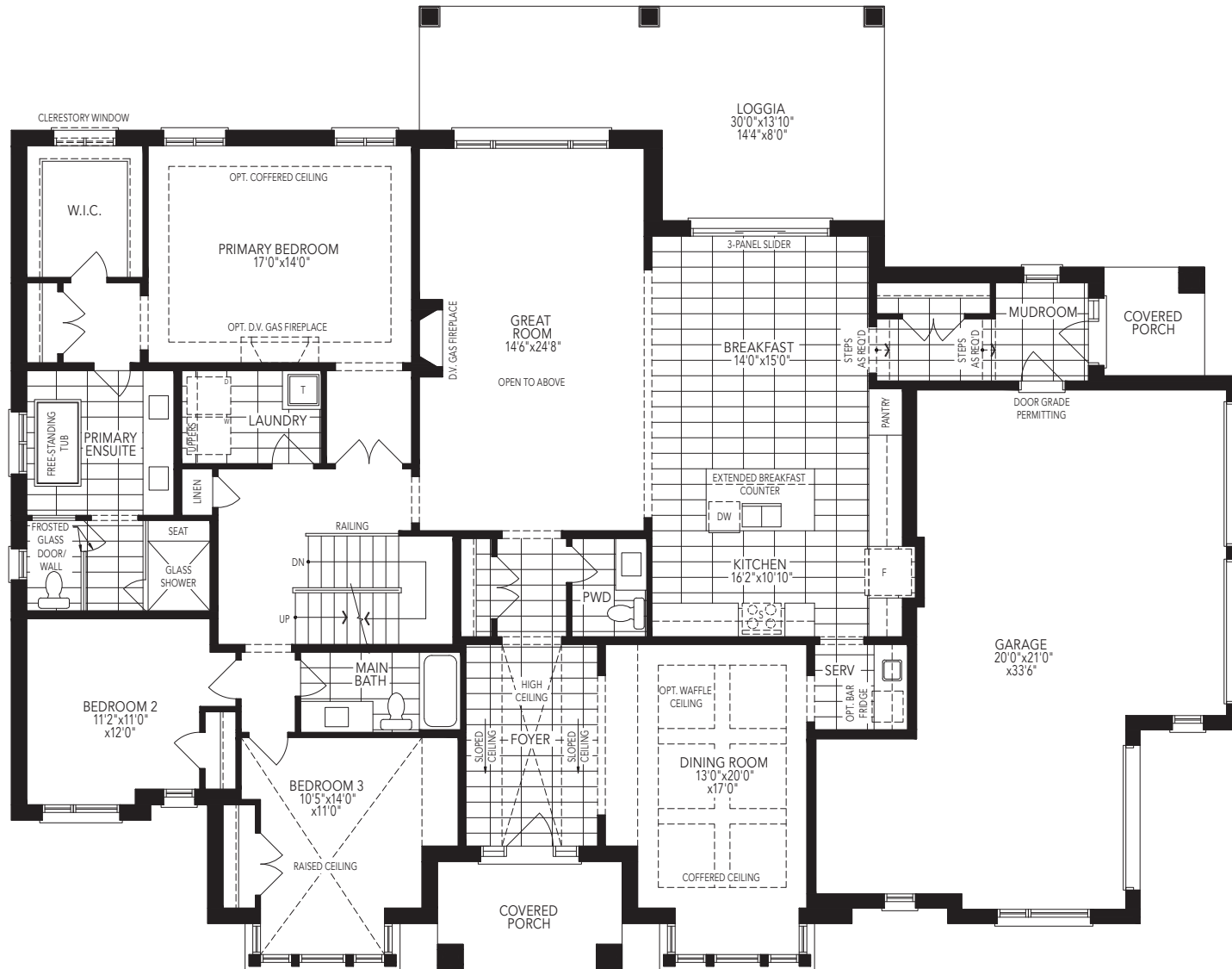




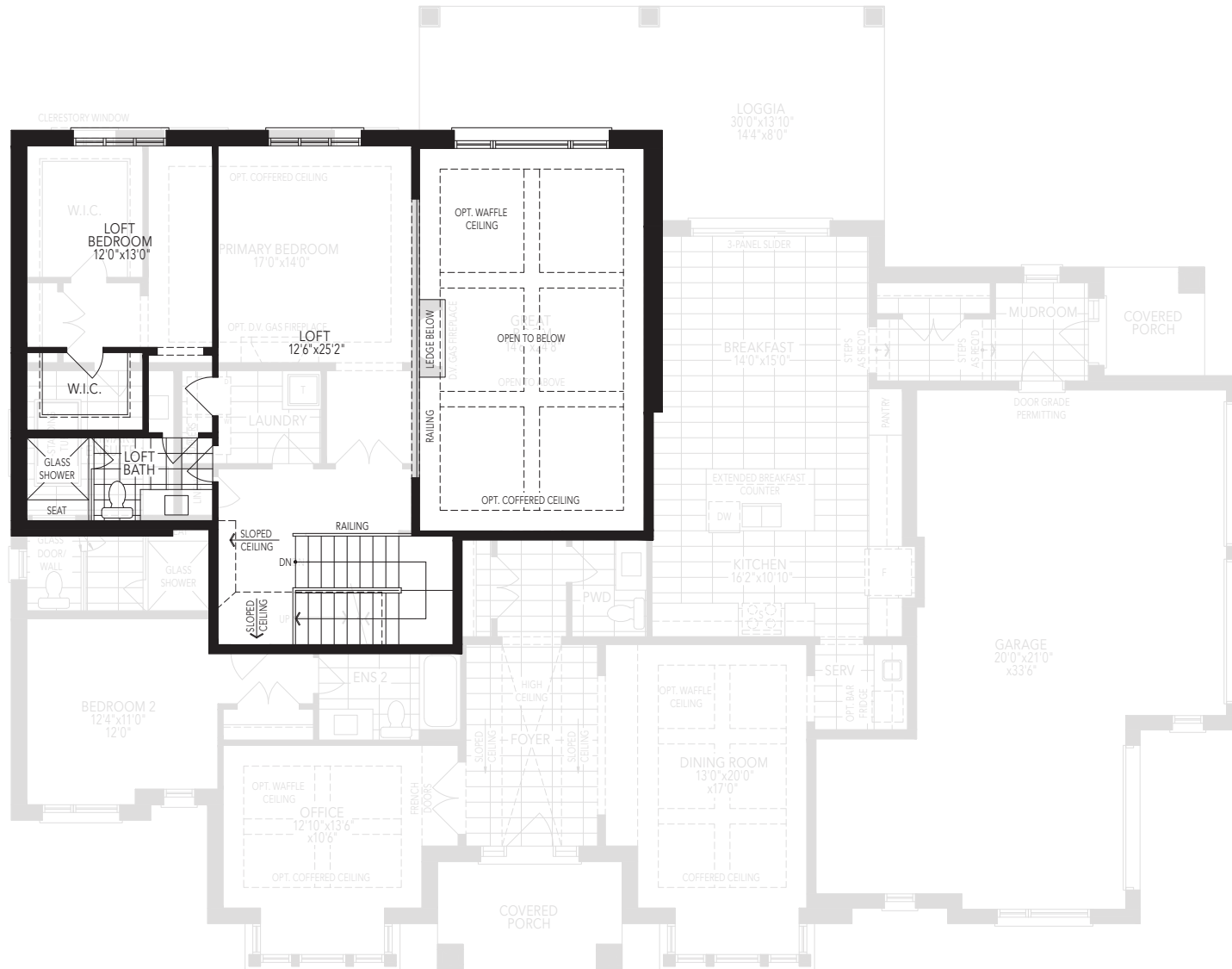
**GROUND FLOOR W/OPT. 3 BEDROOM  
ELEVATION C**



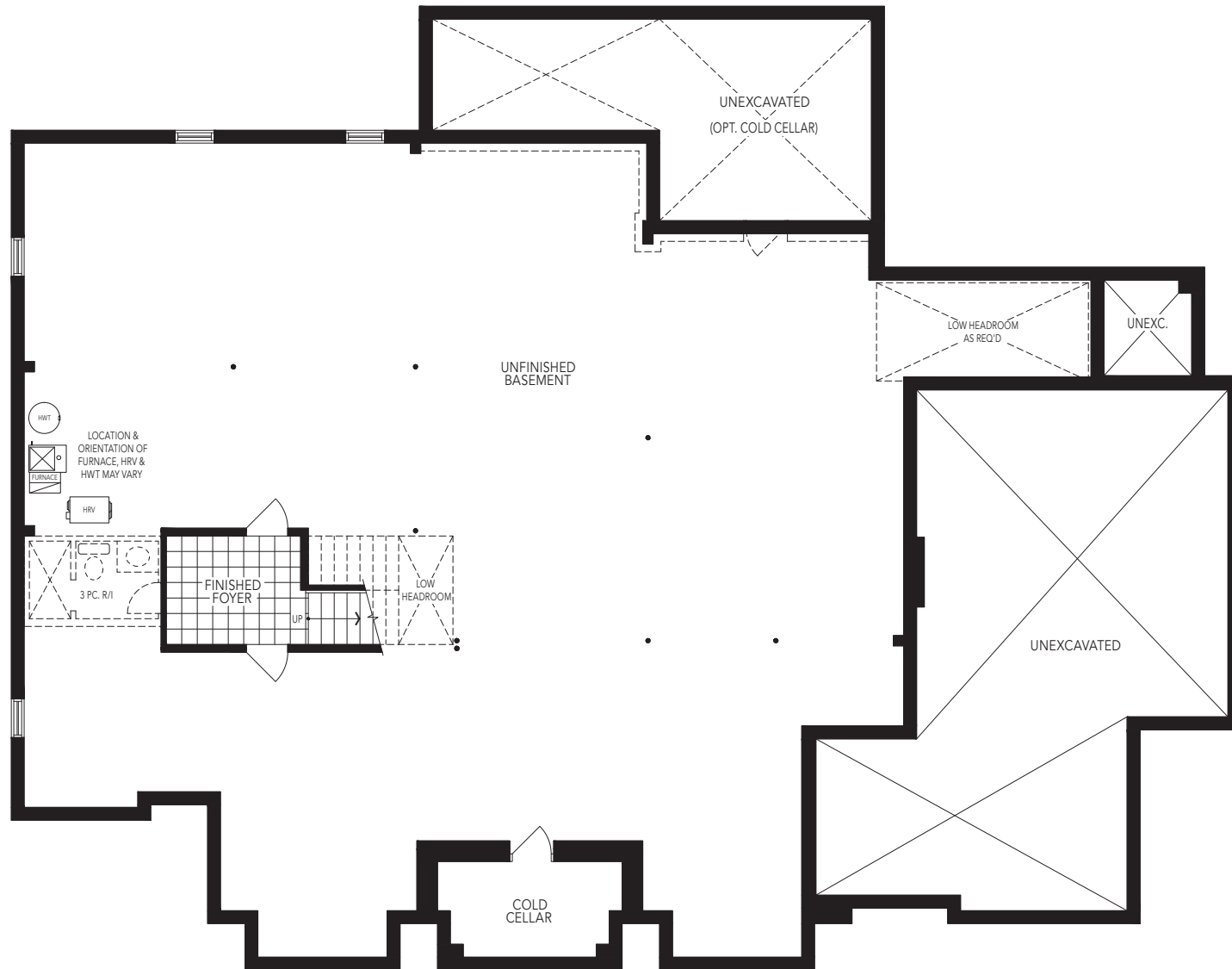
**GROUND FLOOR W/OPT. LOFT  
ELEVATION C**



**GROUND FLOOR W/OPT. 3 BEDROOM + LOFT  
ELEVATION C**

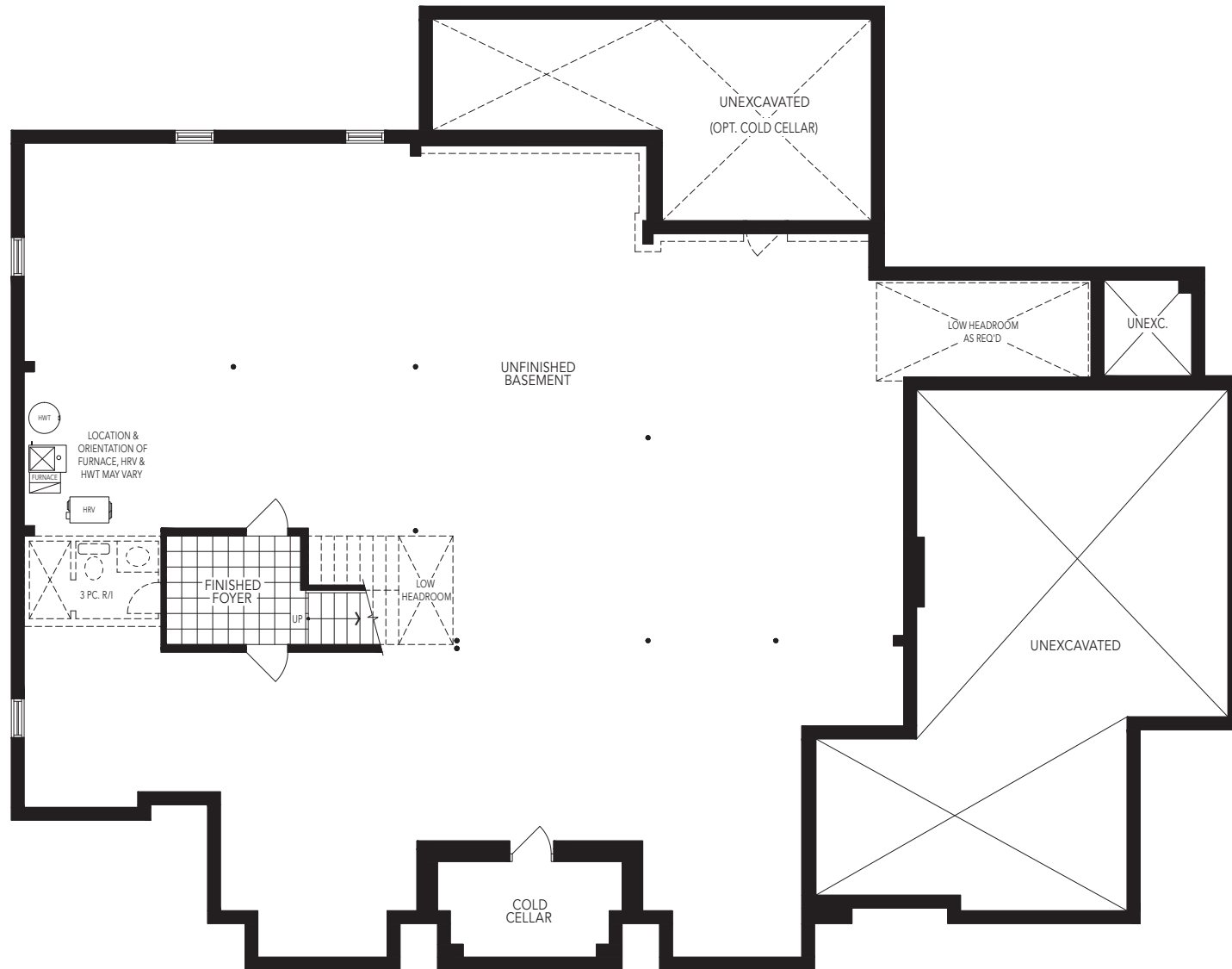


**OPT. LOFT  
ELEVATION C**



**BASEMENT  
ELEVATION C**





**BASEMENT W/OPT. LOFT  
ELEVATION C**