

65' COLLECTION

THE BAYSIDE

(65-03)

ELEVATION A
2,581 SQ. FT. | 3,185 SQ. FT. (WITH OPT. LOFT)
+ 71 SQ. FT. FINISHED BASEMENT.



65' COLLECTION

THE BAYSIDE

(65-03)

ELEVATION B
2,581 SQ. FT. | 3,185 SQ. FT. (WITH OPT. LOFT)
+ 71 SQ. FT. FINISHED BASEMENT.



COURTS OF KING'S BAY

CITY OF KAWARTHA LAKES

65' COLLECTION

THE BAYSIDE

(65-03)

ELEVATION A
2,581 SQ. FT. | 3,185 SQ. FT. (WITH OPT. LOFT)
+ 71 SQ. FT. FINISHED BASEMENT.

ELEVATION B
2,581 SQ. FT. | 3,185 SQ. FT. (WITH OPT. LOFT)
+ 71 SQ. FT. FINISHED BASEMENT.





65' COLLECTION

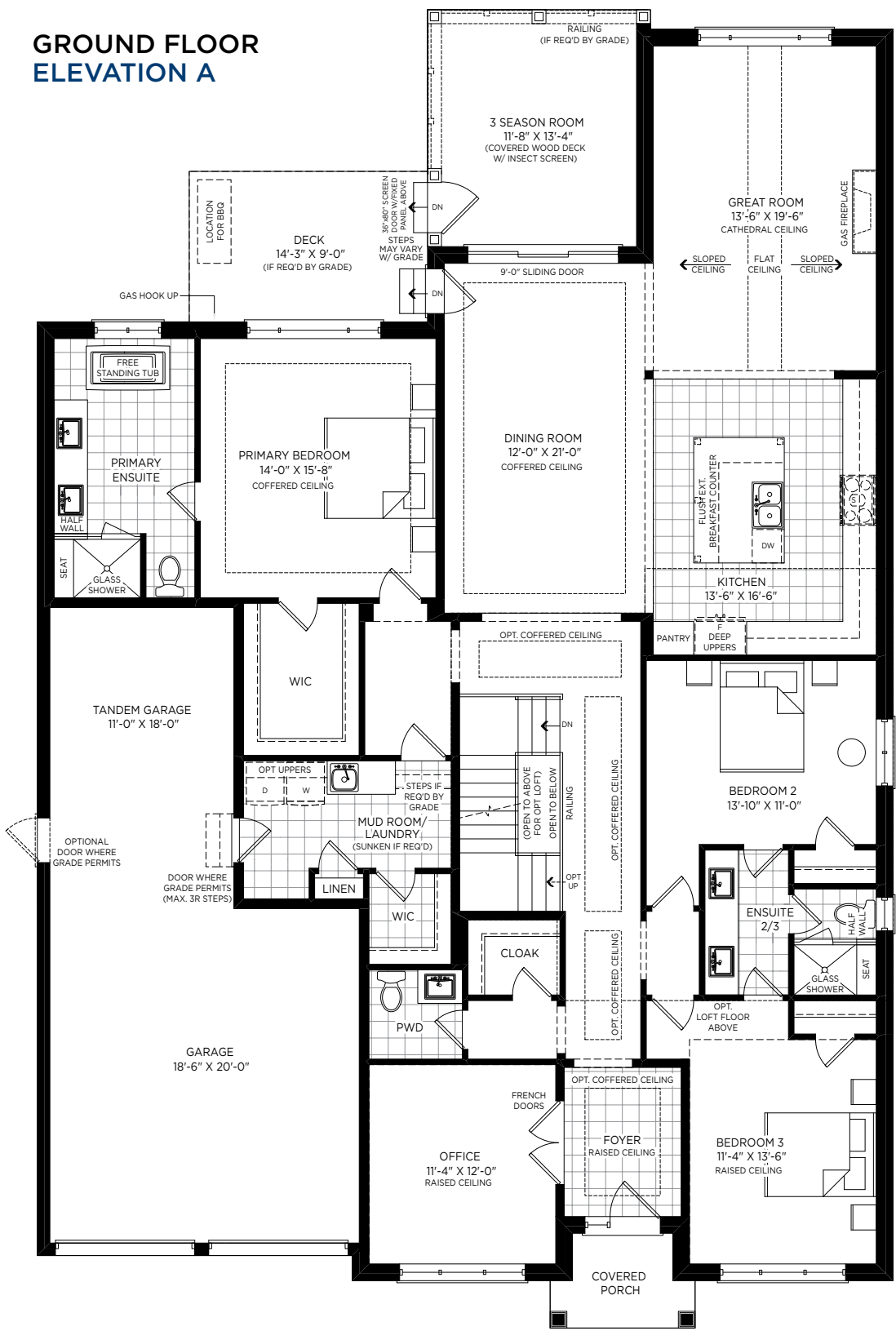
THE BAYSIDE

(65-03)

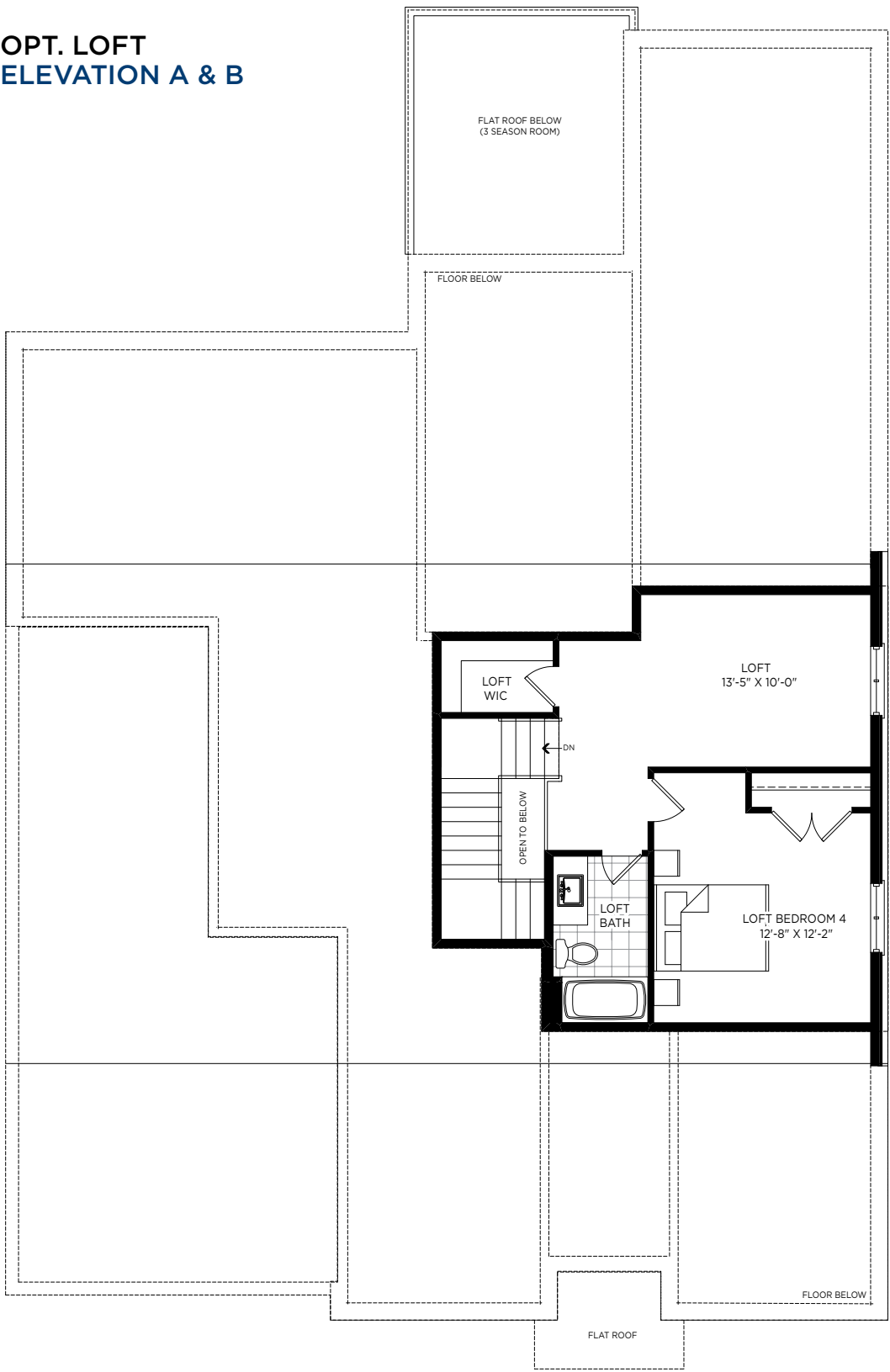
ELEVATION A | 2,581 SQ. FT. | 3,185 SQ. FT. (WITH OPT. LOFT)
+ 71 SQ. FT. FINISHED BASEMENT.

ELEVATION B | 2,581 SQ. FT. | 3,185 SQ. FT. (WITH OPT. LOFT)
+ 71 SQ. FT. FINISHED BASEMENT.

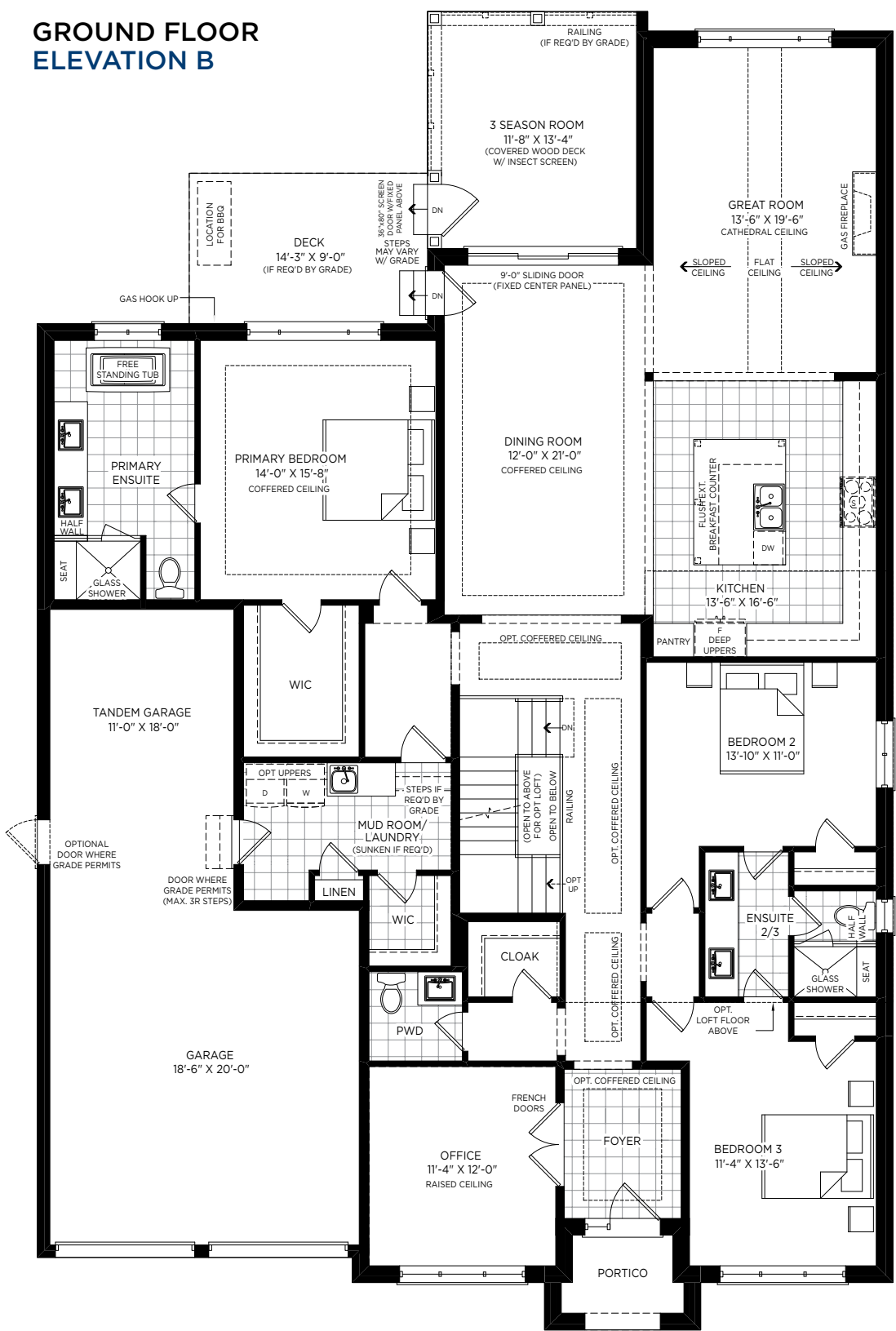
GROUND FLOOR
ELEVATION A



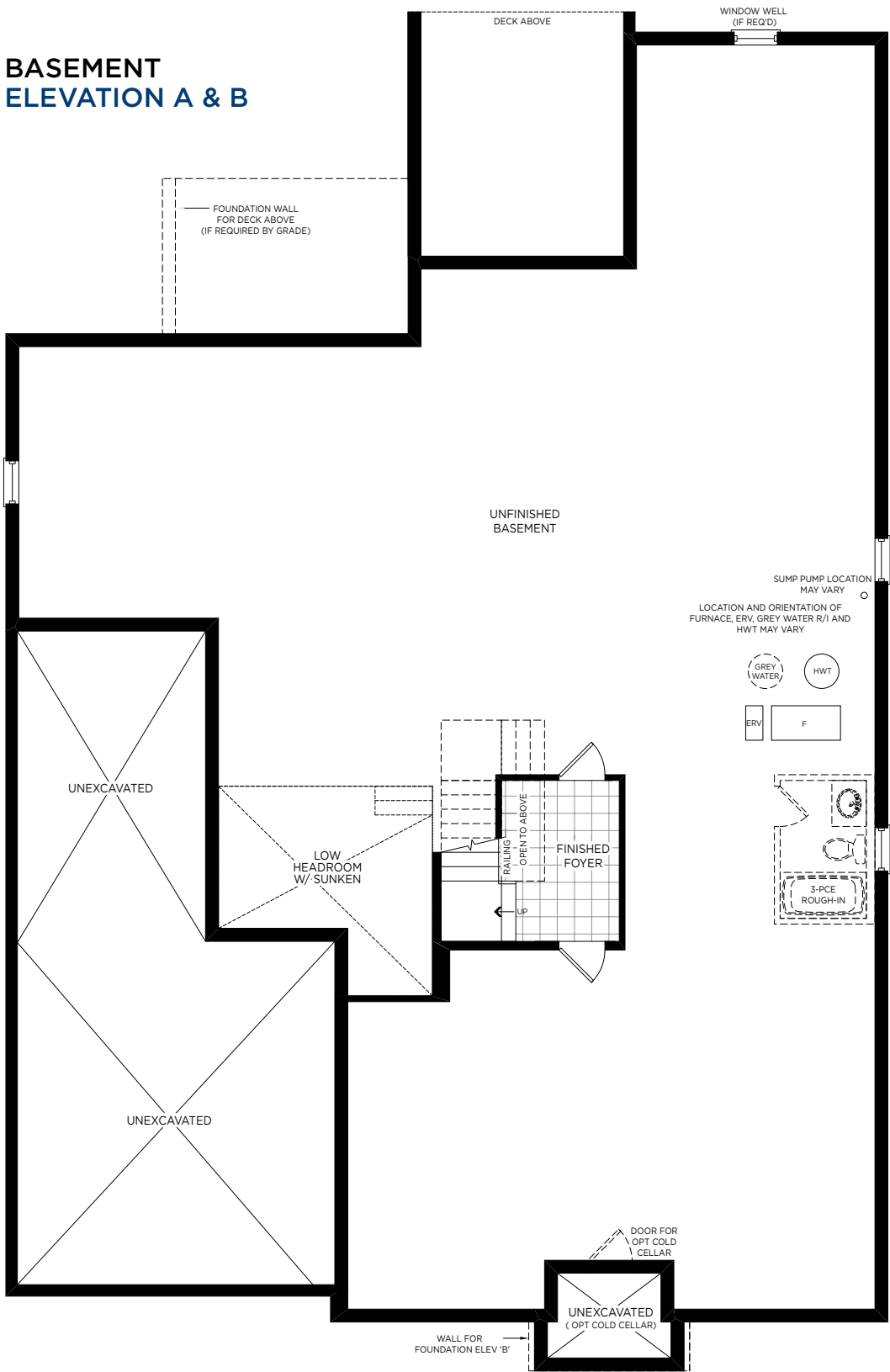
OPT. LOFT
ELEVATION A & B



GROUND FLOOR
ELEVATION B



BASEMENT
ELEVATION A & B



ELEVATION A

ELEVATION A WITH OPT. LOFT

ELEVATION B

ELEVATION B WITH OPT. LOFT