

75' COLLECTION

# THE SEAGRAVE

(75-03)

ELEVATION A

2,980 SQ. FT. | 3,608 SQ. FT. (WITH OPT. LOFT)  
+ 74 SQ. FT. FINISHED BASEMENT



75' COLLECTION

# THE SEAGRAVE

(75-03)

ELEVATION B

2,980 SQ. FT. | 3,608 SQ. FT. (WITH OPT. LOFT)  
+ 74 SQ. FT. FINISHED BASEMENT



## COURTS OF KING'S BAY

CITY OF KAWARTHA LAKES

75' COLLECTION

# THE SEAGRAVE

(75-03)

ELEVATION A

2,980 SQ. FT. | 3,608 SQ. FT. (WITH OPT. LOFT)  
+ 74 SQ. FT. FINISHED BASEMENT

ELEVATION B

2,980 SQ. FT. | 3,608 SQ. FT. (WITH OPT. LOFT)  
+ 74 SQ. FT. FINISHED BASEMENT







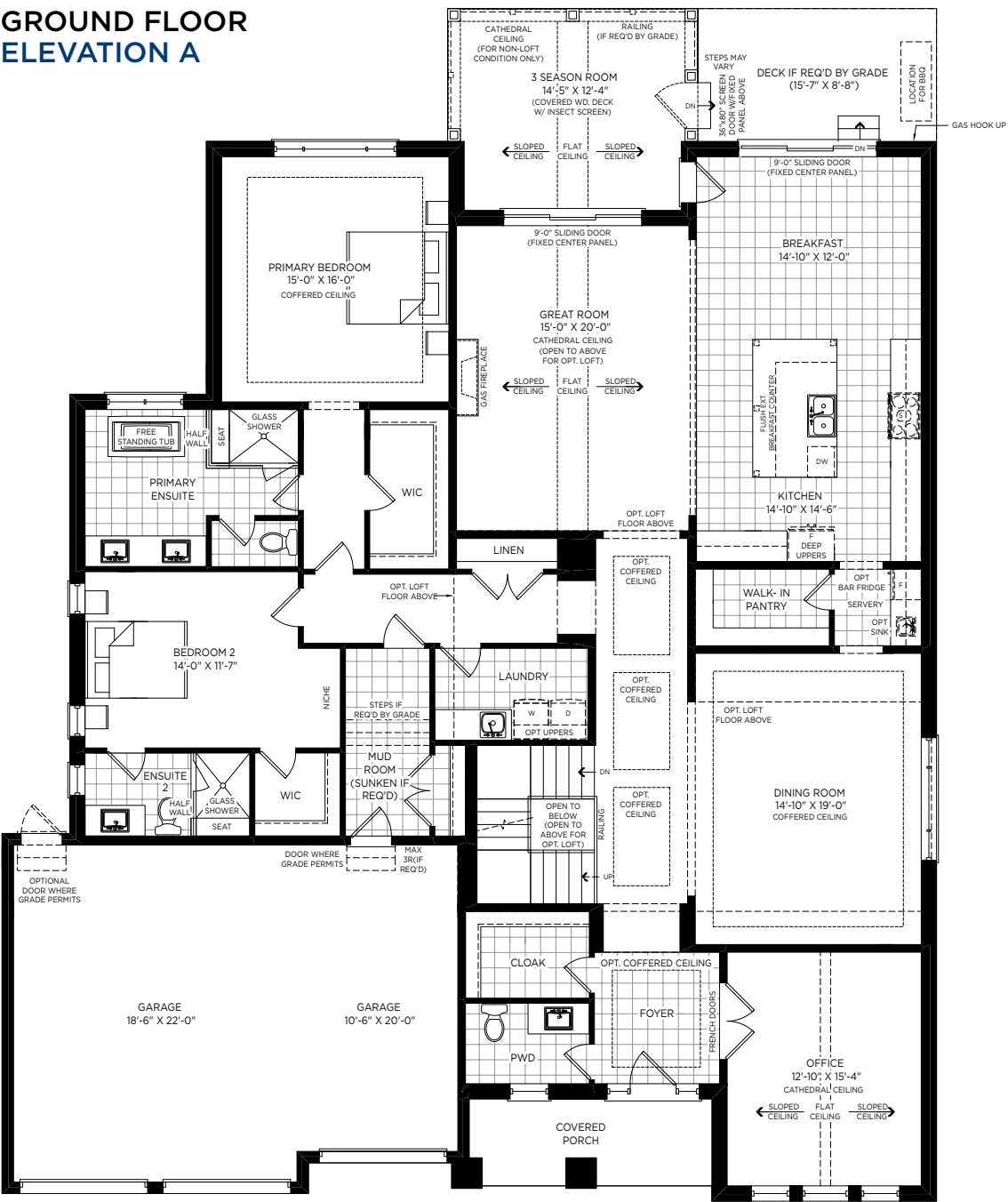
75' COLLECTION

# THE SEAGRAVE (75-03)

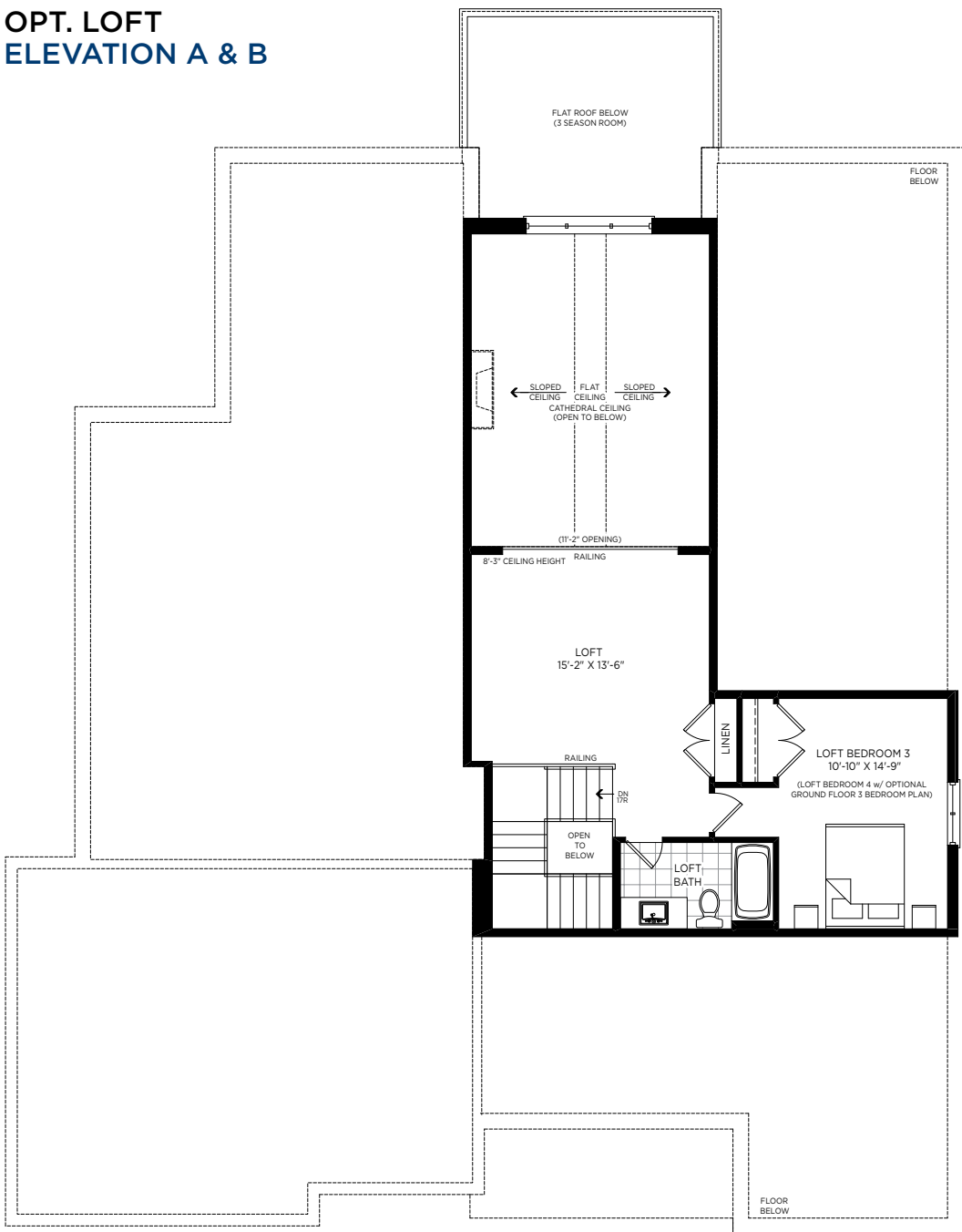
ELEVATION A | 2,980 SQ. FT. | 3,608 SQ. FT. (WITH OPT. LOFT)  
+ 74 SQ. FT. FINISHED BASEMENT

ELEVATION B | 2,980 SQ. FT. | 3,608 SQ. FT. (WITH OPT. LOFT)  
+ 74 SQ. FT. FINISHED BASEMENT

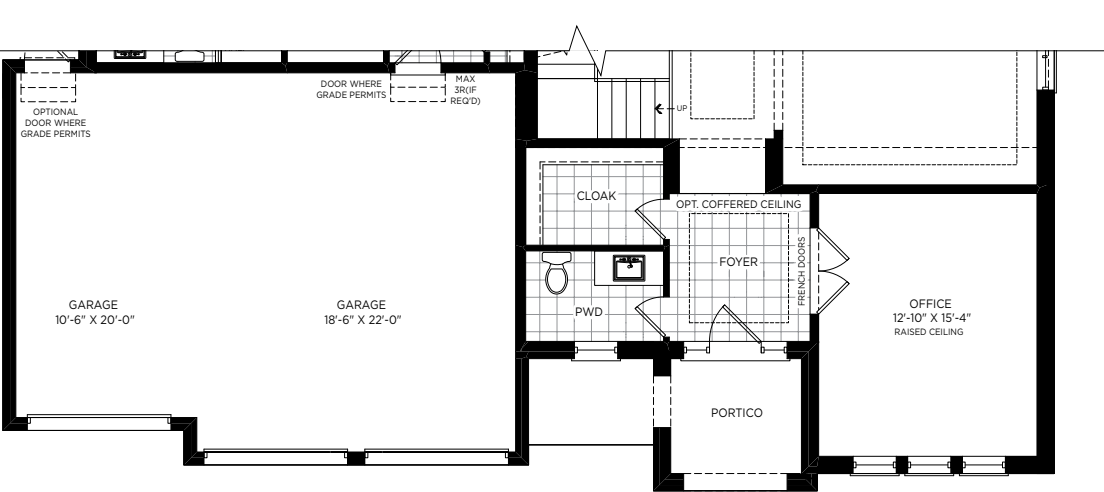
GROUND FLOOR  
ELEVATION A



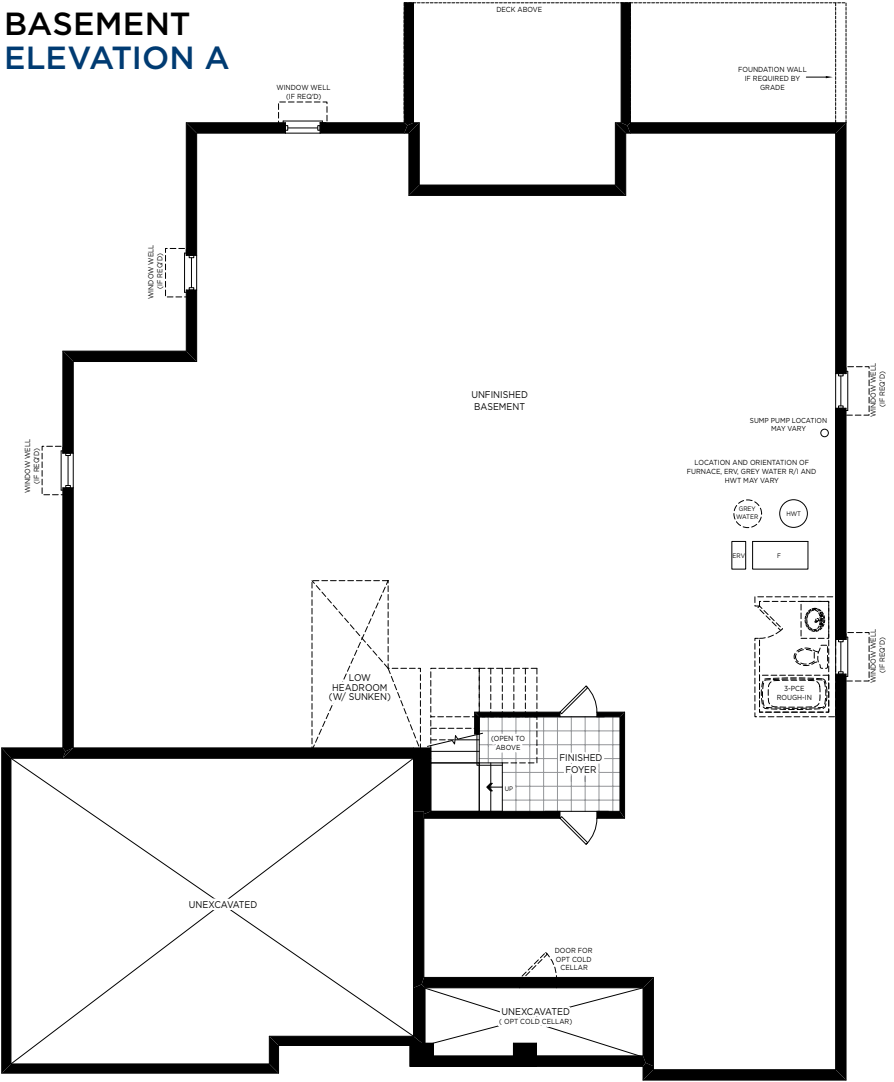
OPT. LOFT  
ELEVATION A & B



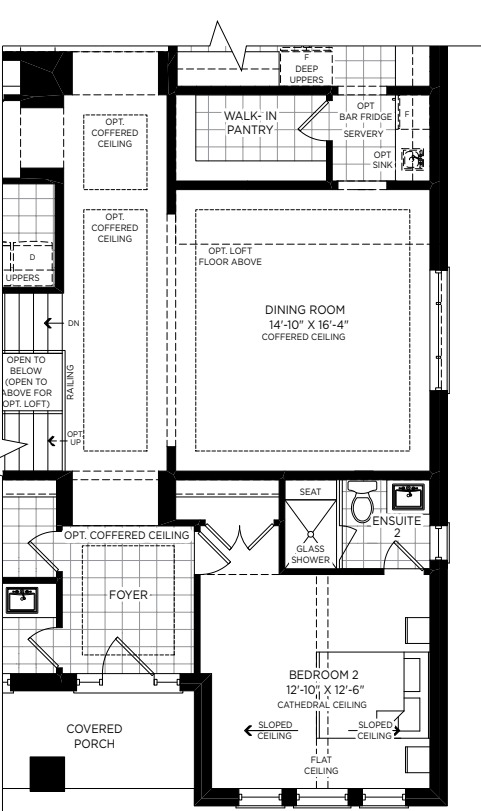
GROUND FLOOR  
ELEVATION B



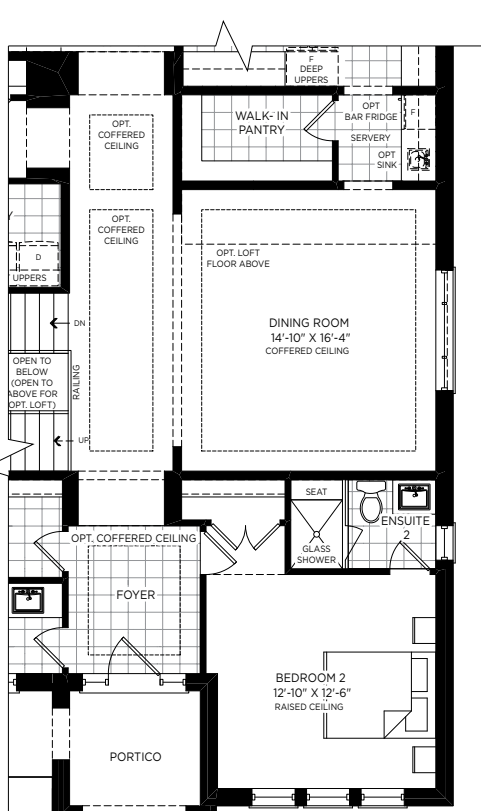
BASEMENT  
ELEVATION A



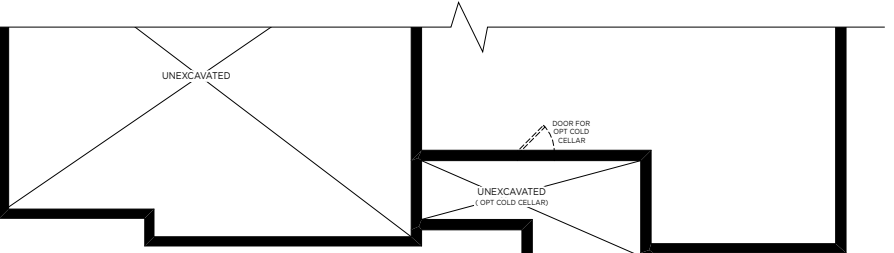
OPT. GROUND FLOOR  
WITH THIRD BEDROOM  
ELEVATION A



OPT. GROUND FLOOR  
WITH THIRD BEDROOM  
ELEVATION B



BASEMENT  
ELEVATION B



ELEVATION A



ELEVATION A WITH OPT. LOFT



ELEVATION B



ELEVATION B WITH OPT. LOFT