



48 DAFFODIL ROAD

Lot 220 | **SIMCOE (44-02)** | Elevation A

4 Bedrooms | 3.5 Bathrooms | 2,905 sq. ft.



MOVE IN READY!

geranium.com

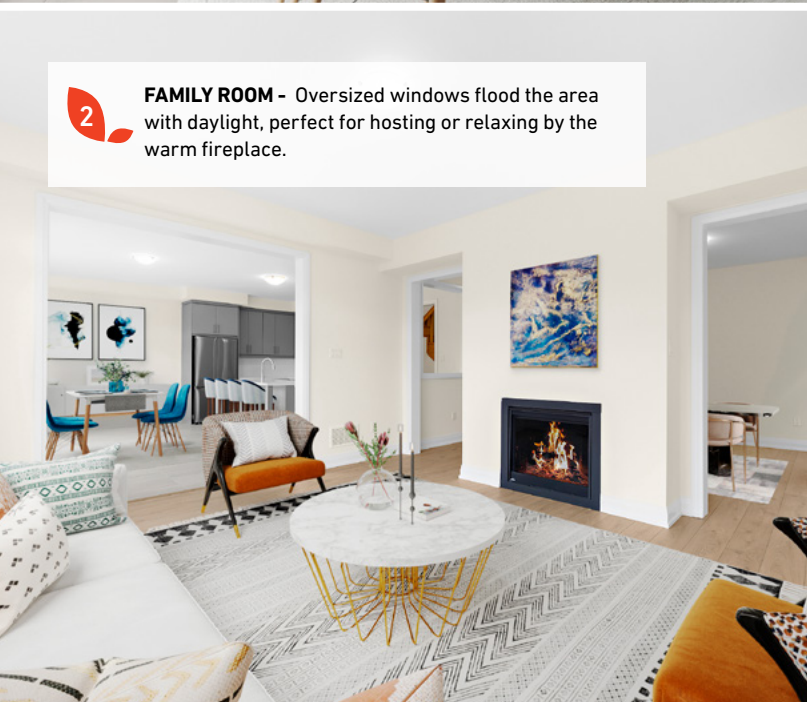
1

KITCHEN - This elegantly designed Kitchen encourages gourmet cooking experiences while its open layout ensures a welcoming ambiance.



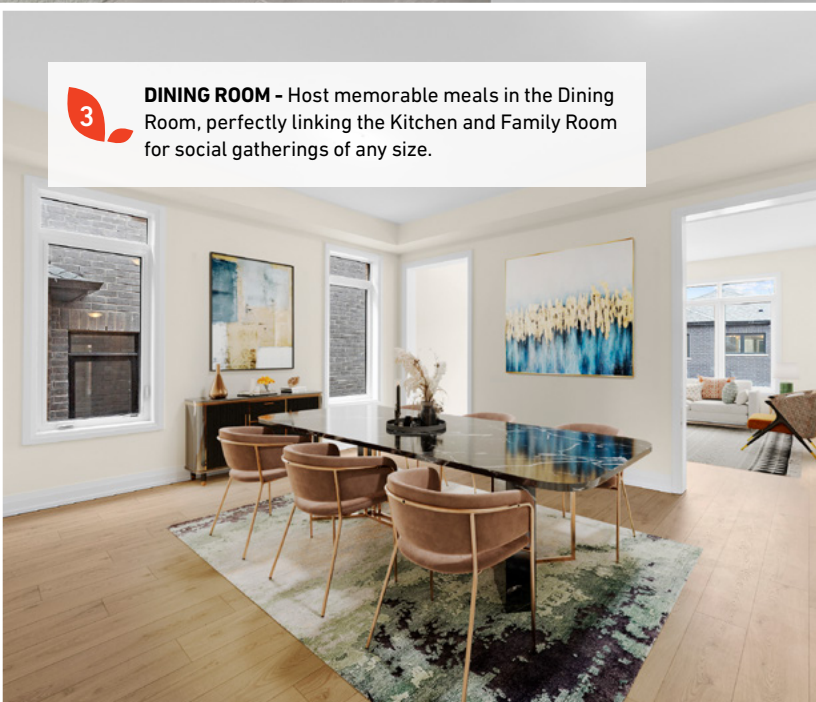
2

FAMILY ROOM - Oversized windows flood the area with daylight, perfect for hosting or relaxing by the warm fireplace.



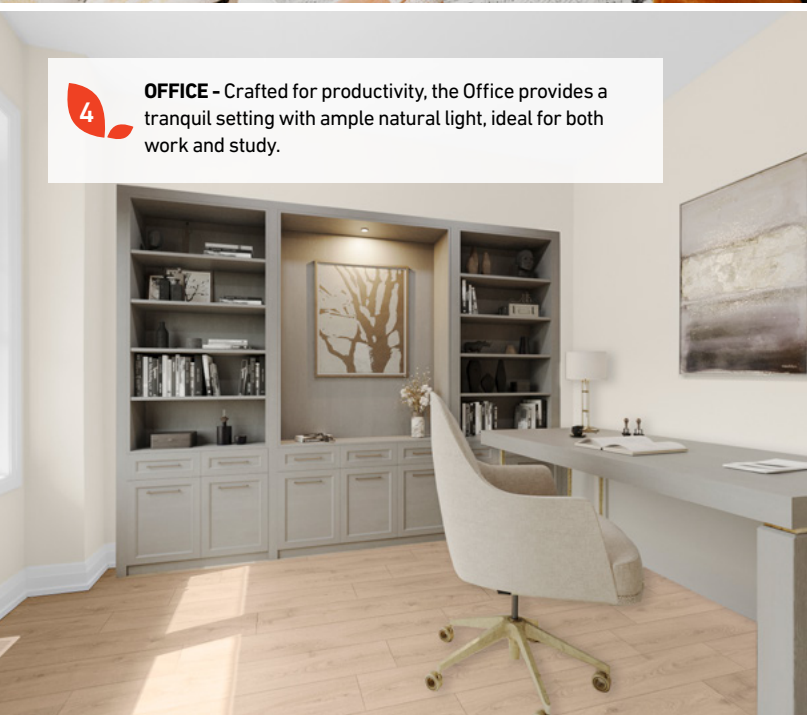
3

DINING ROOM - Host memorable meals in the Dining Room, perfectly linking the Kitchen and Family Room for social gatherings of any size.



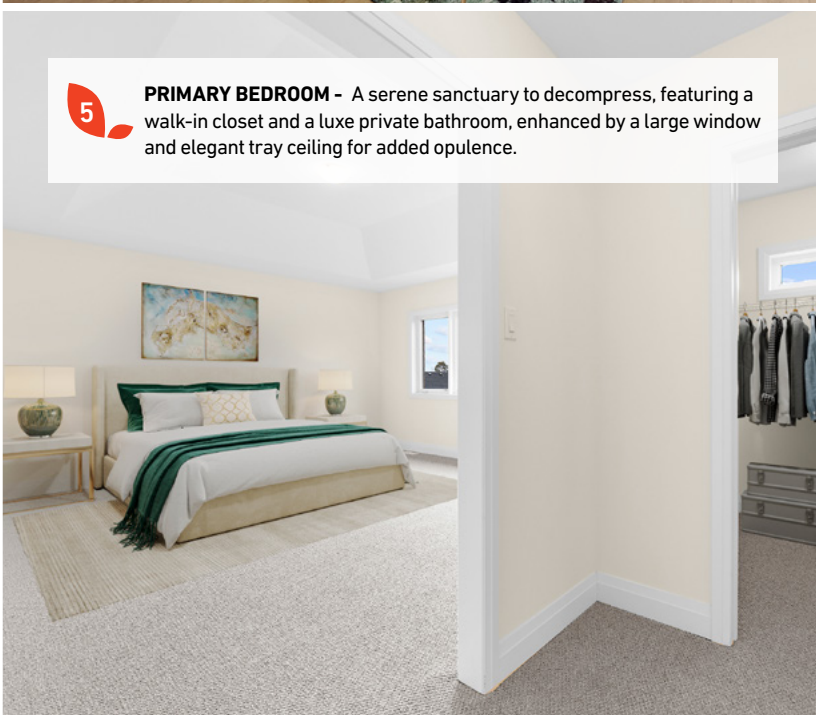
4

OFFICE - Crafted for productivity, the Office provides a tranquil setting with ample natural light, ideal for both work and study.



5

PRIMARY BEDROOM - A serene sanctuary to decompress, featuring a walk-in closet and a luxe private bathroom, enhanced by a large window and elegant tray ceiling for added opulence.

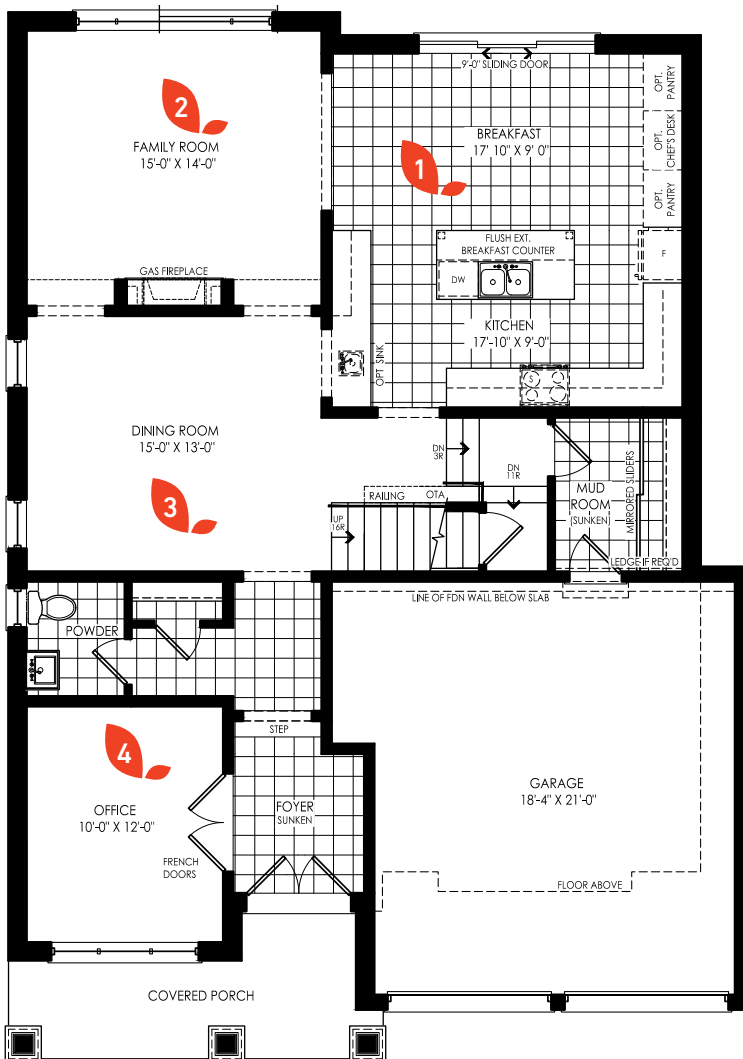


48 DAFFODIL ROAD

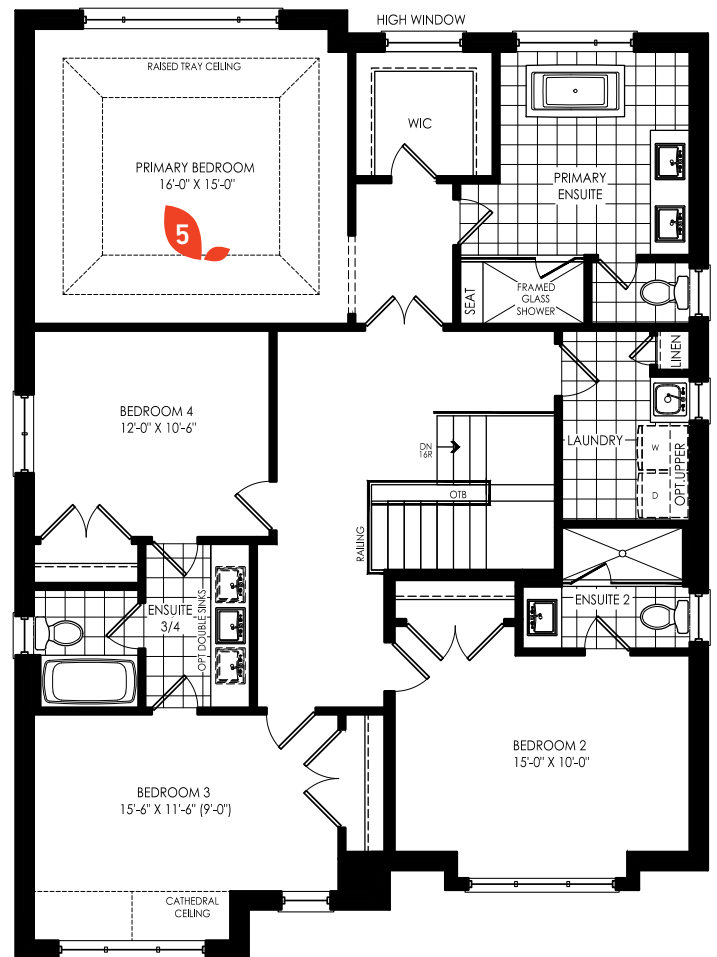
Lot 220 | SIMCOE (44-02) | Elevation A

4 Bedrooms | 3.5 Bathrooms | 2,905 sq. ft.

GROUND FLOOR FEATURES



SECOND FLOOR FEATURES



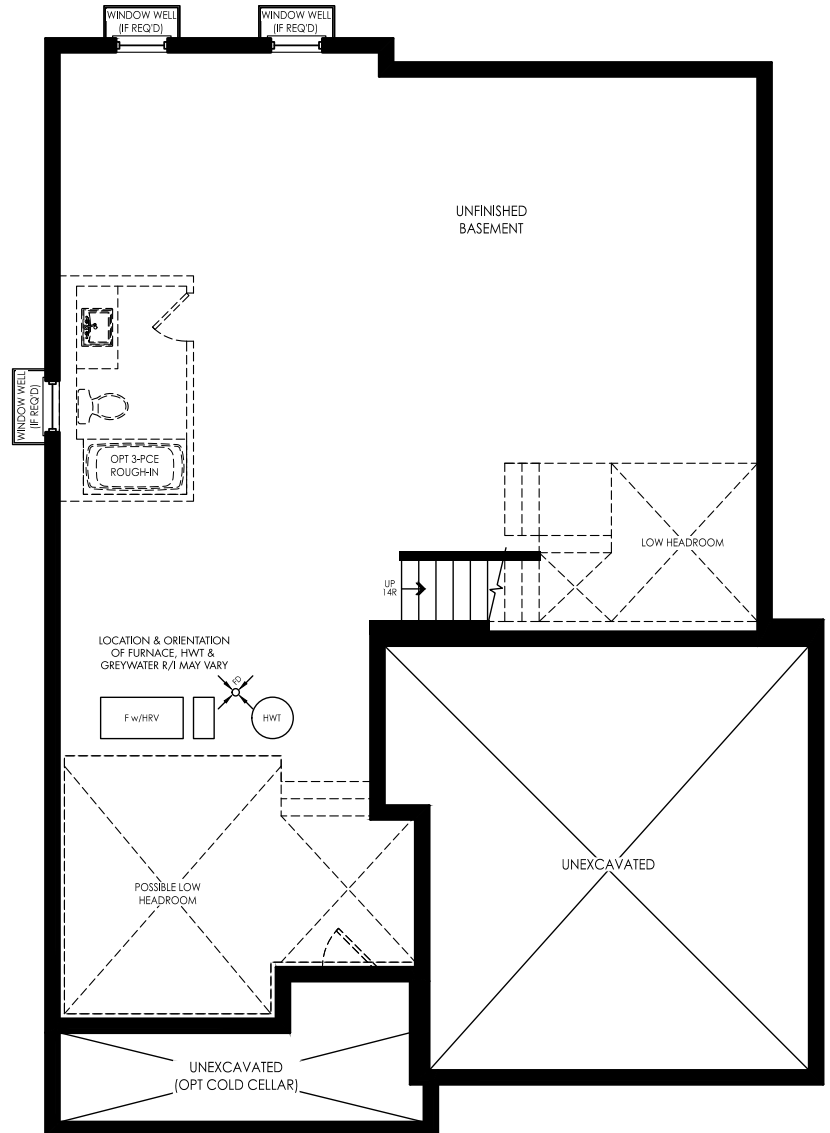


MIDHURST
VALLEY

SIMCOE INVENTORY HOME UPGRADED FEATURES & FINISHES:

- Walk-out Basement
- Egress window in Basement
- Upgraded floor tiles in select areas
- Caesarstone Kitchen countertops
- Tray ceiling in Primary Bedroom
- Appliances include Fridge, Stove, Dishwasher, Washer & Dryer
- 5 1/4" baseboard

UNFINISHED BASEMENT



FOR MORE INFORMATION ON THIS HOME OR TO BOOK A PRIVATE VIEWING, CONTACT:

PHONE:
437.288.8404

EMAIL:
midhurstvalleysales@geranium.com

geranium.com