



GERANIUM
From the ground up™



**MIDHURST
VALLEY**

52 BEARBERRY ROAD

Lot 224R | **VIOLET (SM-04)** | Elevation B
3 Bedrooms | 2.5 Bathrooms | 1,982 sq. ft.



MOVE IN READY!

geranium.com

1

KITCHEN - This elegantly-designed Kitchen encourages gourmet cooking experiences while its Breakfast Nook ensures a welcoming ambiance.



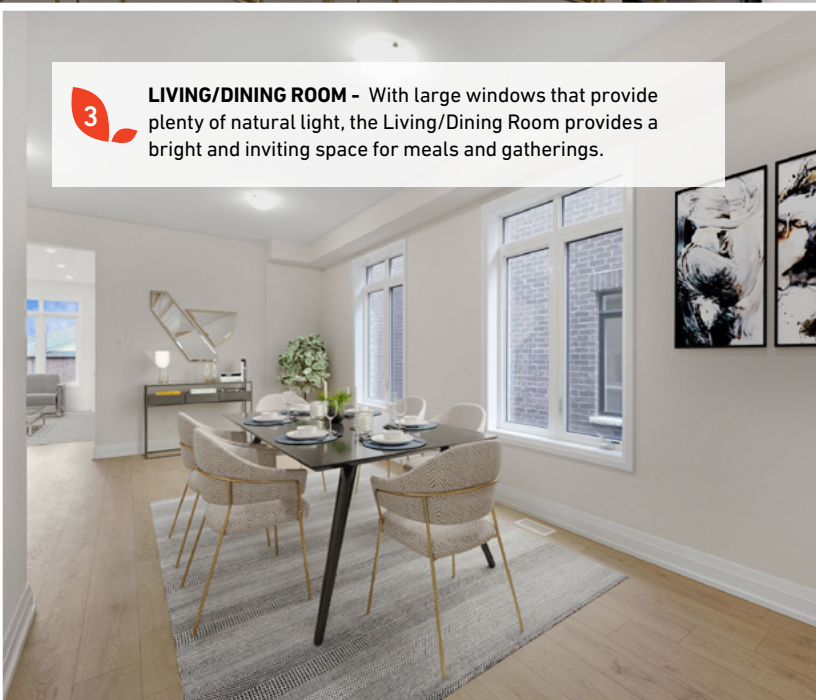
2

FAMILY ROOM - Centrally-located between the Kitchen and Dining Room, it's the perfect spot for family gatherings and everyday comfort.



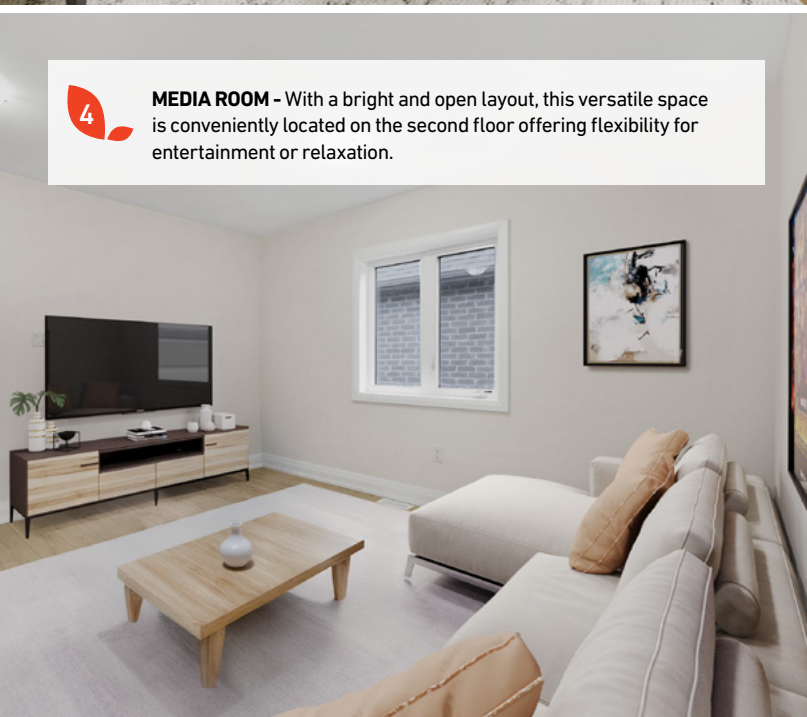
3

LIVING/DINING ROOM - With large windows that provide plenty of natural light, the Living/Dining Room provides a bright and inviting space for meals and gatherings.



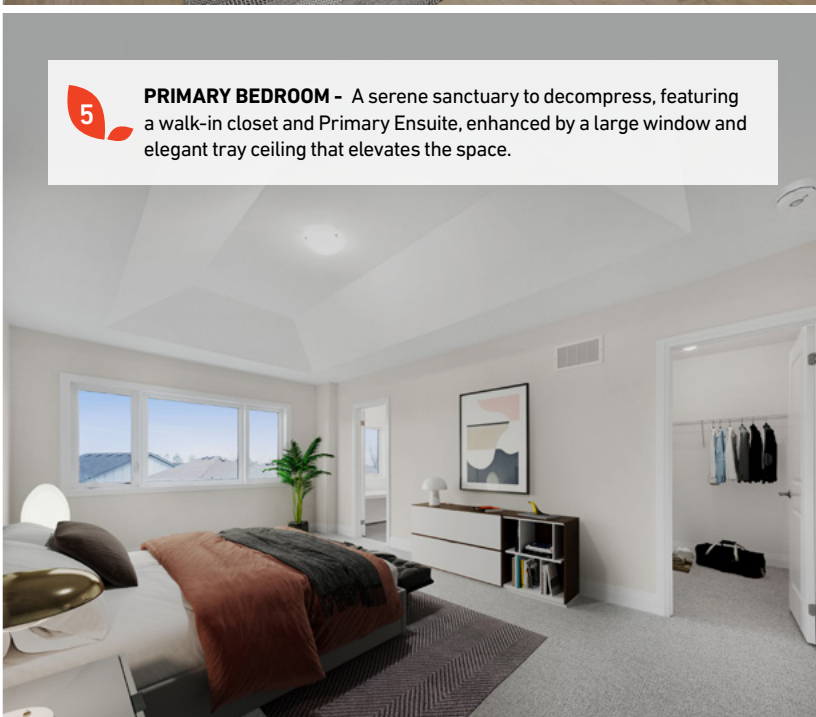
4

MEDIA ROOM - With a bright and open layout, this versatile space is conveniently located on the second floor offering flexibility for entertainment or relaxation.



5

PRIMARY BEDROOM - A serene sanctuary to decompress, featuring a walk-in closet and Primary Ensuite, enhanced by a large window and elegant tray ceiling that elevates the space.

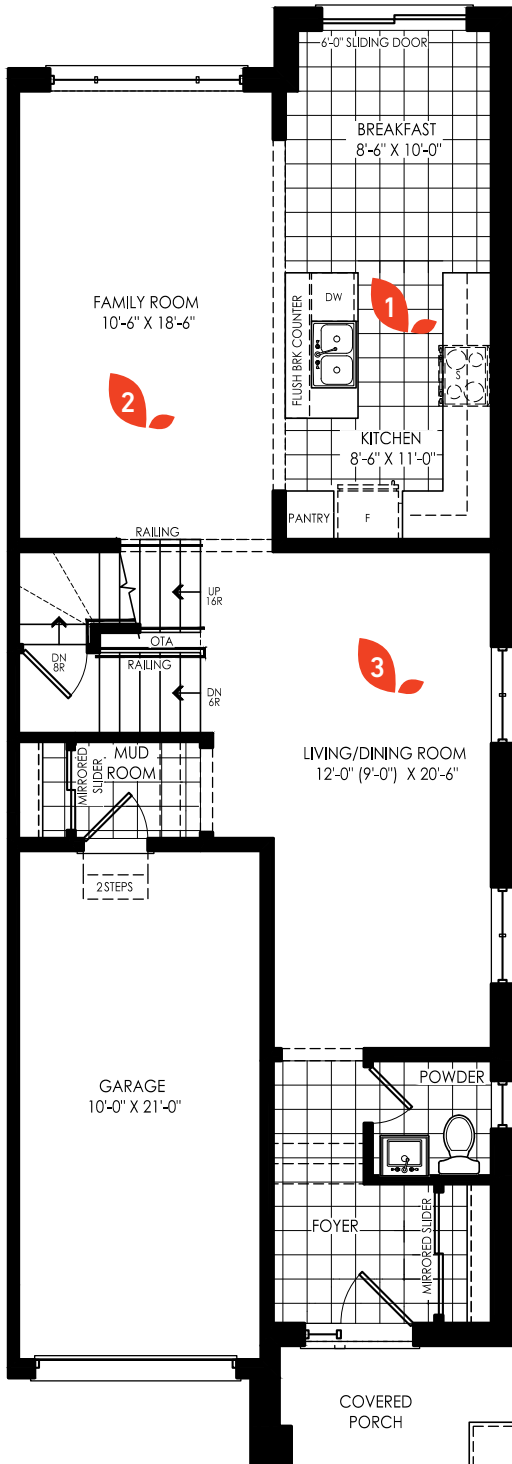


52 BEARBERRY ROAD

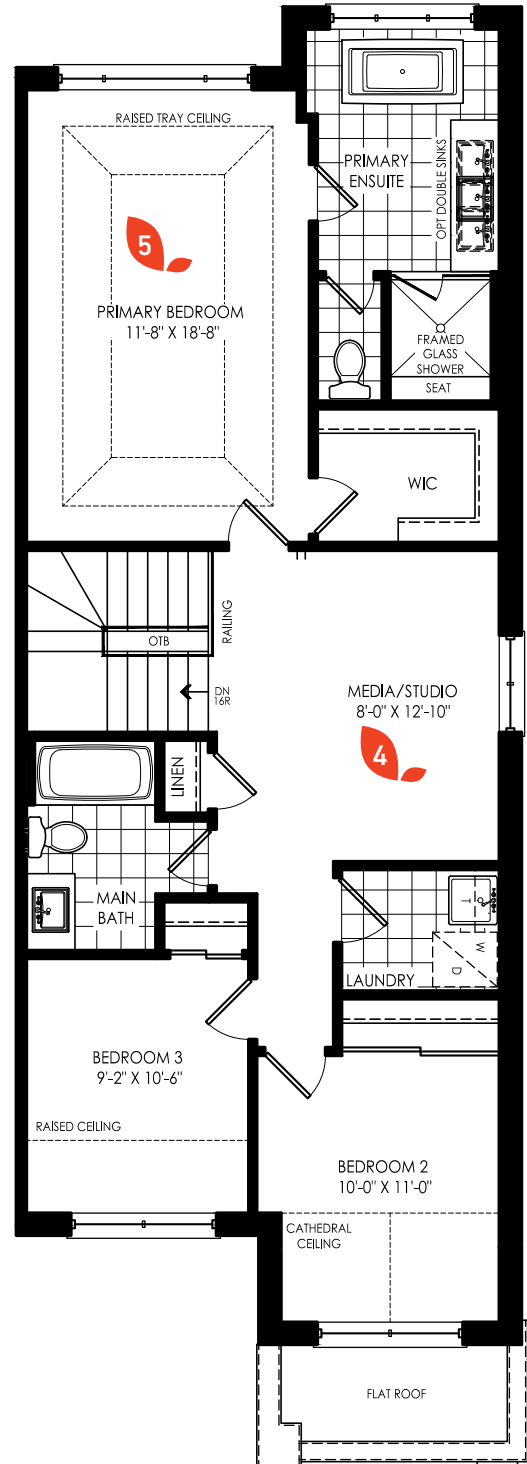
Lot 224R | VIOLET (SM-04) | Elevation B

3 Bedrooms | 2.5 Bathrooms | 1,982 sq. ft.

GROUND FLOOR FEATURES



SECOND FLOOR FEATURES



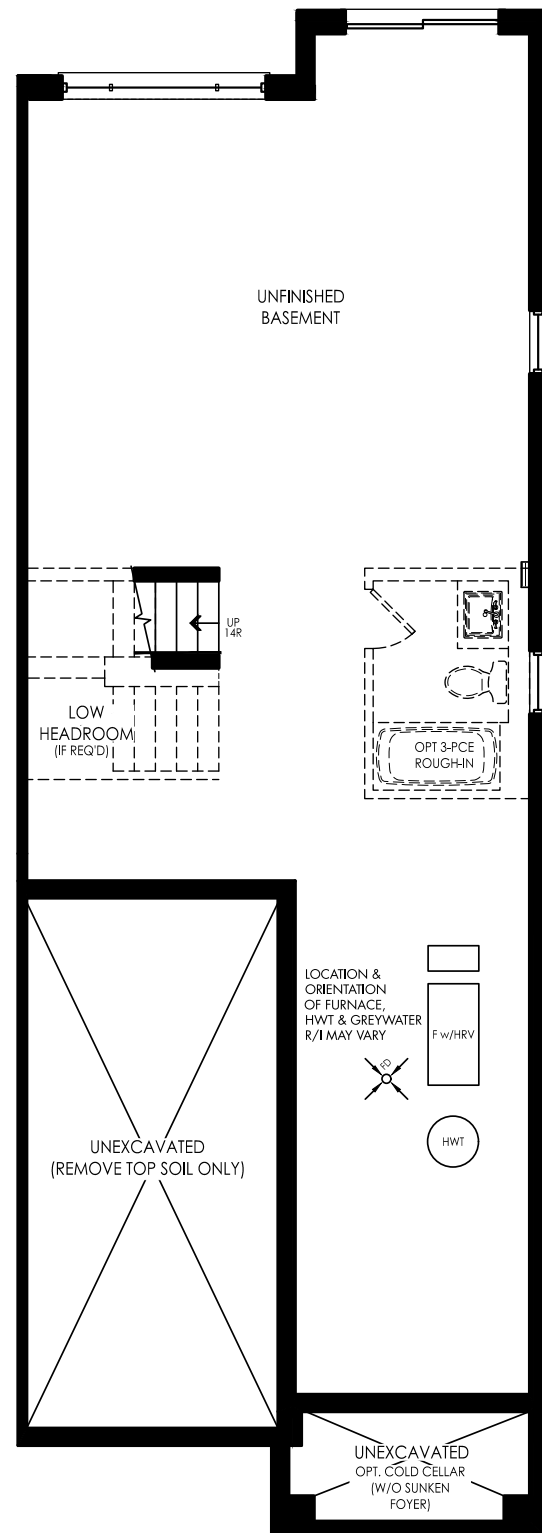


MIDHURST
VALLEY

VIOLET INVENTORY HOME UPGRADED FEATURES & FINISHES:

- Walkout Basement
- Enlarged Basement window
- 3-pc rough-in in Basement
- Increased main floor door height
- Upgraded Kitchen countertops
- Upgraded floor tiles in select areas
- Various electrical upgrades
- Bonus Media Room on second floor

UNFINISHED BASEMENT



FOR MORE INFORMATION ON THIS HOME OR TO BOOK A PRIVATE VIEWING, CONTACT:

PHONE:
437.288.8404

EMAIL:
midhurstvalleysales@geranium.com

geranium.com